

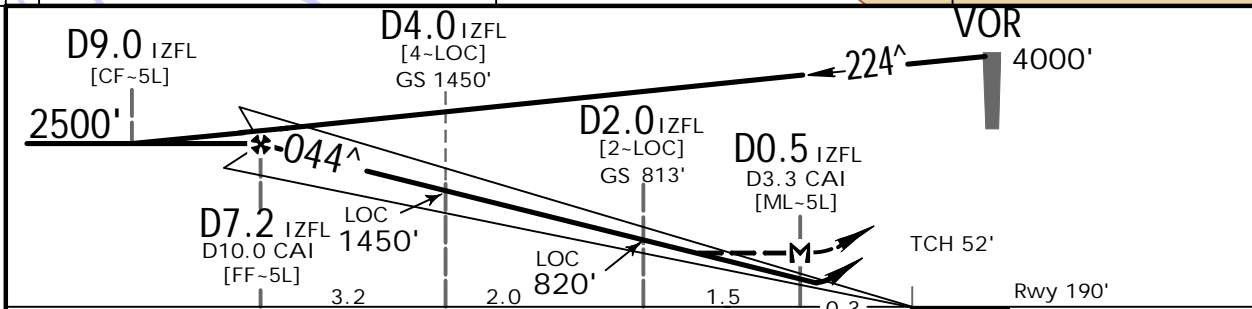
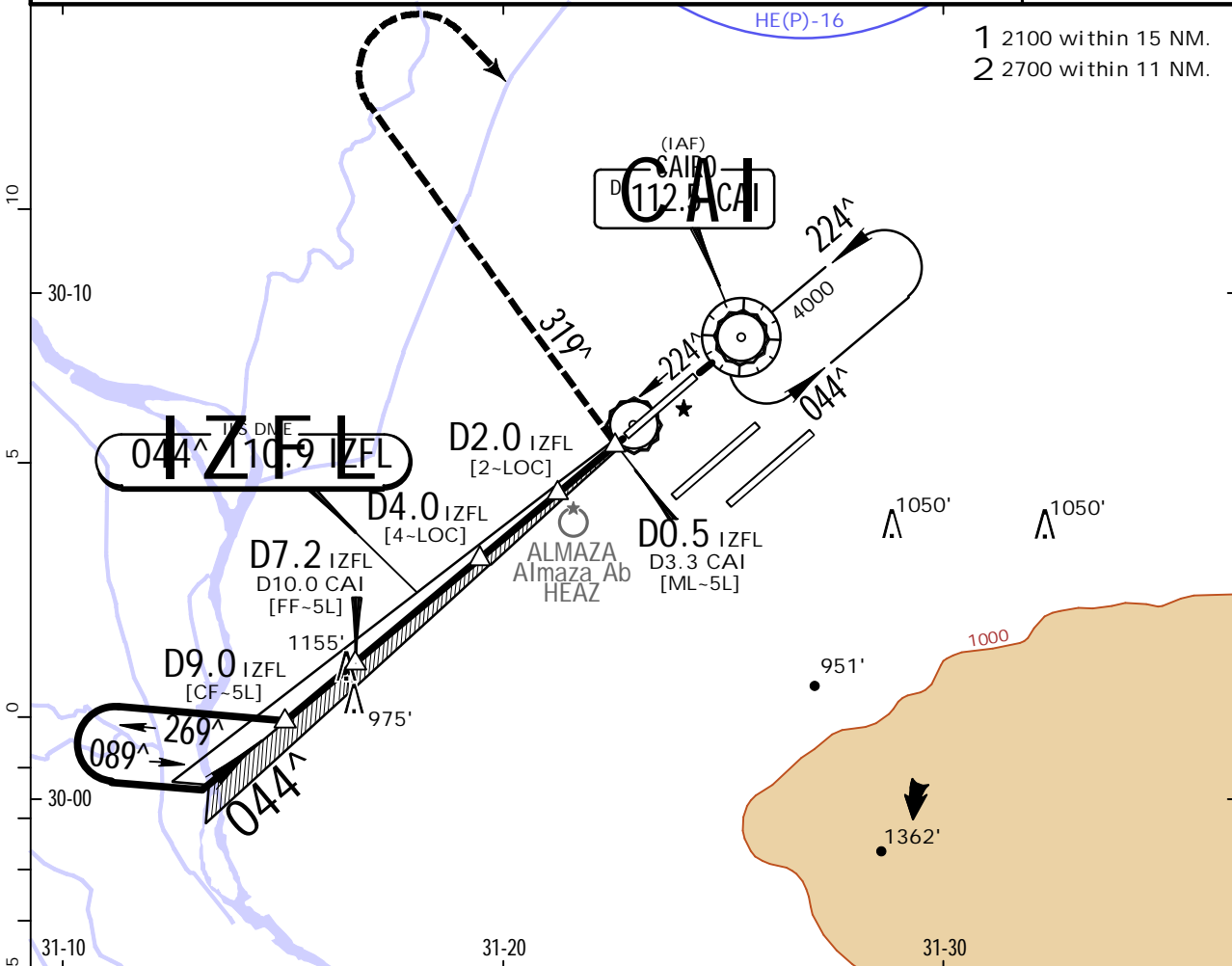
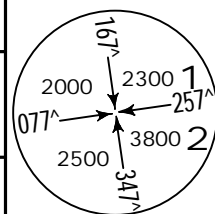
HECA/CAI  
CAIRO INTL



4 AUG 23 (11-1) .Eff.10.Aug.

CAIRO, EGYPT  
ILS or LOC Rwy 05L

BRIEFING STRIP™	D-ATIS 122.6	CAIRO Approach (R) 119.050		CAIRO Tower 118.1	South 120.4	Ground North 121.9
	LOC IZFL 110.9	Final Apch Crs 044^	D7.2 IZFL 2500' (2310')	ILS DA(H) Refer to Minimums	Apt Elev 467' Rwy 190'	
	MISSED APCH: Turn LEFT onto 319^ climbing to 2500', then turn RIGHT to VOR and hold at 4000', or as directed.					MSA ARP
Alt Set: hPa		Rwy Elev: 7 hPa		Trans level: FL060		Trans alt: 4500'



Gnd speed-Kts	70	90	100	120	140	160	HIALS PAPI PAPI	2500' LT onto 319^
ILS GS or LOC Descent Angle	3.00^	372	478	531	637	743		
MAP at D0.5 IZFL/D3.3 CAI								

.State.		ILS		STRAIGHT-IN LANDING		LOC (GS out)	
		DA(H)	A: 440' (250') B: 452' (262')	C: 460' (270') D: 471' (281')		MDA(H)	760' (570')
		FULL		ALS out		ALS out	
A	R600m	R1300m	R1900m	R2600m			
B							
C							
D	R650m	R1400m					

# HECA/CAI

## CAIRO INTL



29 SEP 23

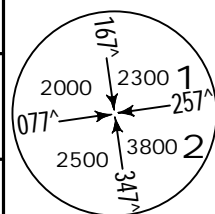
11-2

.Eff.5.Oct.

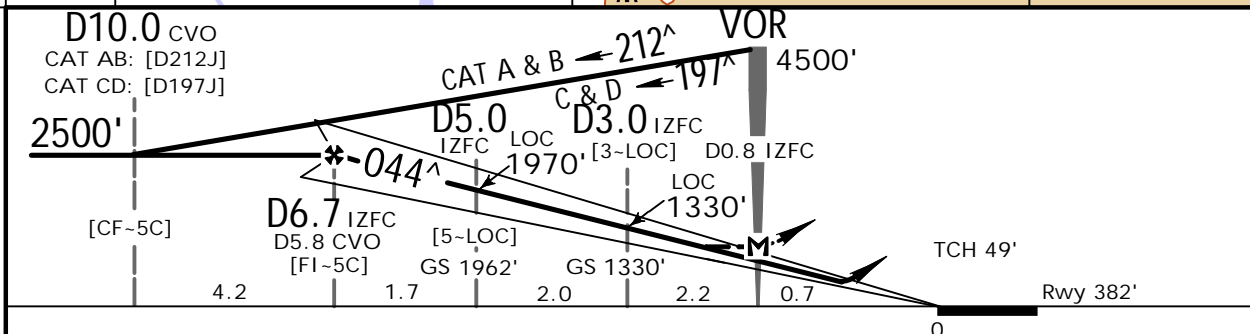
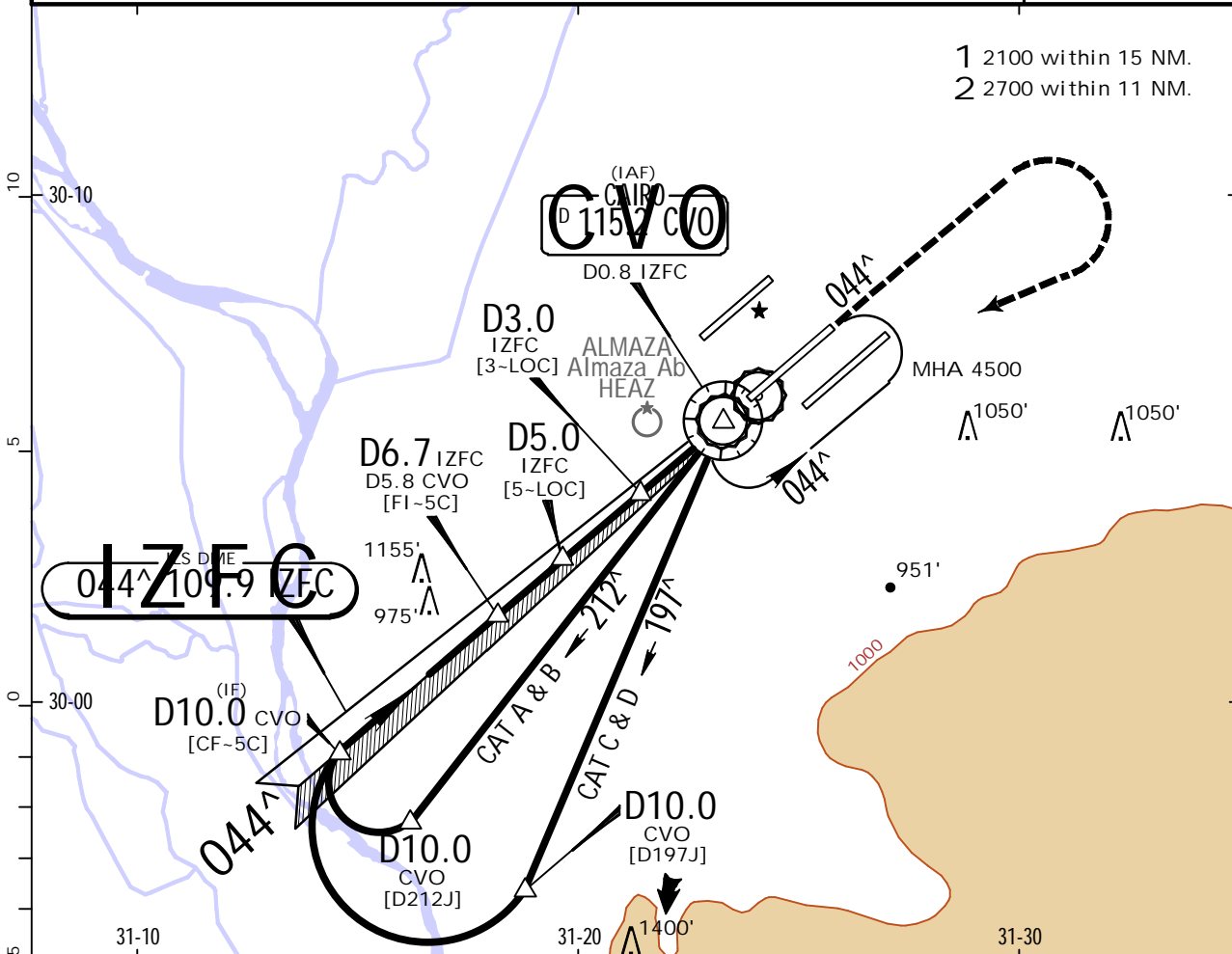
# CAIRO, EGYPT

## ILS or LOC Rwy 05C

D-ATIS 122.6	CAIRO Approach (R) 119.050	CAIRO Tower 118.1	South 120.4	Ground North 121.9
LOC IZFC 109.9	Final Apch Crs 044^	D6.7 IZFC 2500' (2118')	ILS DA(H) Refer to Minimums	Apt Elev 467' Rwy 382'
MISSED APCH: Climb STRAIGHT AHEAD to 2000', then turn RIGHT climbing to reach VOR at 4500' and hold, or as directed.				
Alt Set: hPa	Rwy Elev: 14 hPa	Trans level: FL060	Trans alt: 4500'	



MSA ARP



Gnd speed-Kts	70	90	100	120	140	160	
ILS GS or	3.00^	372	478	531	637	743	
LOC Descent Angle							
MAP at VOR/D0.8 IZFC							

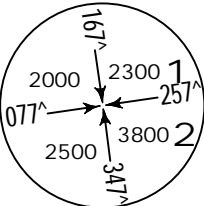
.State.		ILS		STRAIGHT-IN LANDING		LOC (GS out)	
DA(H)		A: 611' (229')	C: 631' (249')			MDA(H) 710' (328')	
B: 623' (241')		D: 642' (260')					
		ALS out				ALS out	
A	R550m	R1200m		R800m		R1500m	
B							
C							
D	R600m	R1300m					

HECA/CAI  
CAIRO INTL

JEPPESSEN  
29 SEP 23 11-2A .Eff.5.Oct.

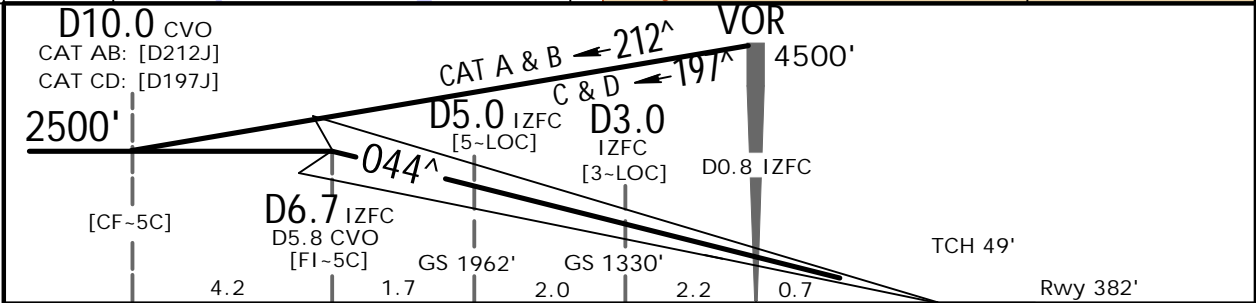
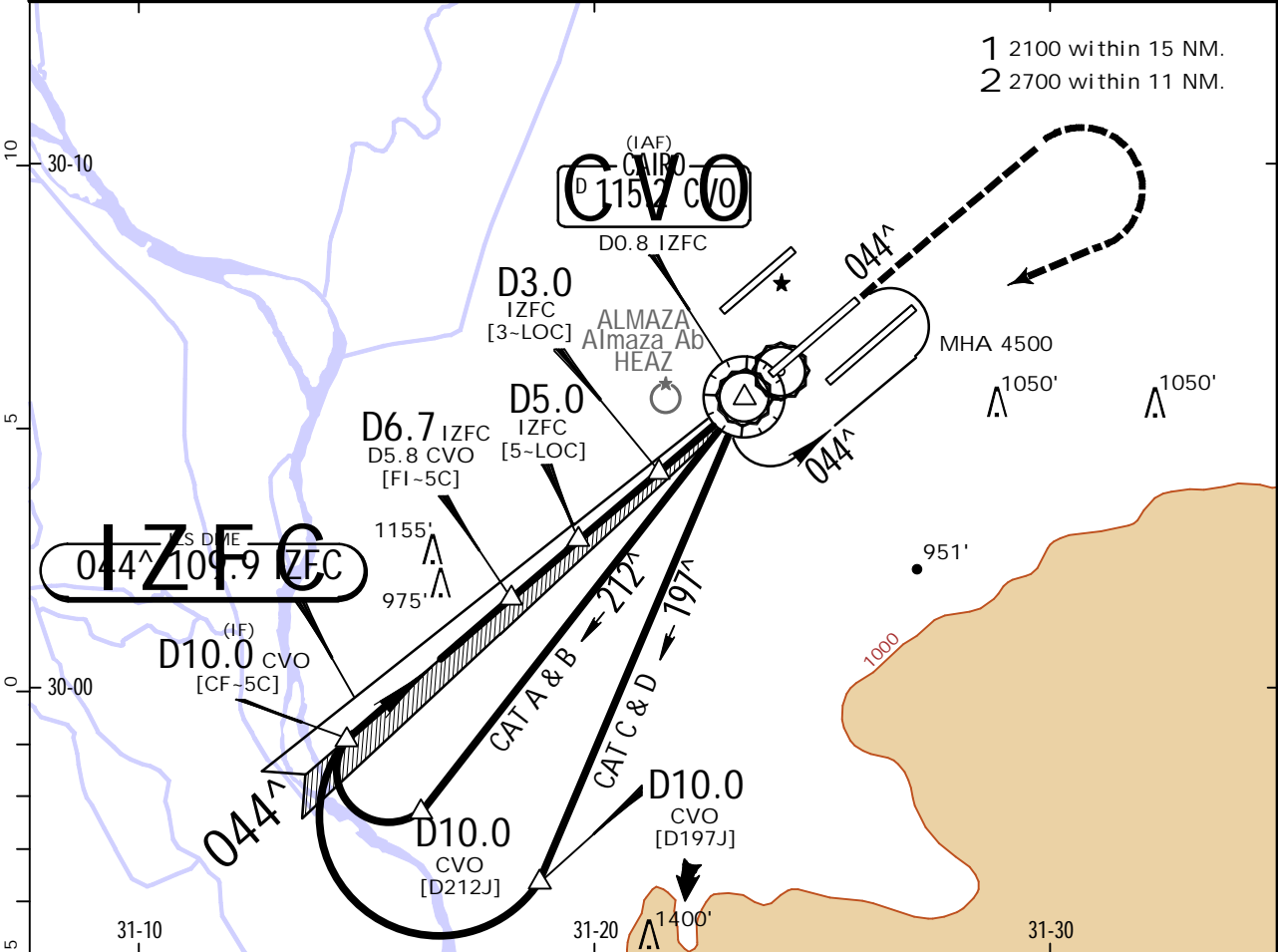
CAIRO, EGYPT  
CAT II ILS Rwy 05C

D-ATIS 122.6		CAIRO Approach (R) 119.050		CAIRO Tower 118.1		South 120.4		Ground North 121.9	
LOC IZFC 109.9		Final Apch Crs 044^		D6.7 IZFC 2500' <sub>(2118')</sub>		CAT II ILS RA/DA(H) Refer to Minimums		Apt Elev 467'  Rwy 382'	
MISSED APCH: Climb STRAIGHT AHEAD to 2000', then turn RIGHT climbing to reach VOR at 4500' and hold, or as directed.									
Alt Set: hPa		Rwy Elev: 14 hPa			Trans level: FL060		Trans alt: 4500'		
Special Aircrew and Acft Certification Required.									



MSA ARP

1 2100 within 15 NM.  
2 2700 within 11 NM.



Gnd speed-Kts	70	90	100	120	140	160	HIALS-II PAPI PAPI 2000'
GS	3.00^	372	478	531	637	743	

State. STRAIGHT-IN LANDING CAT II ILS			
A RA 104' DA(H) 482' (100')	B RA 111' DA(H) 491' (109')	C RA 119' DA(H) 503' (121')	D RA 129' DA(H) 517' (135')
R300m		R400m	

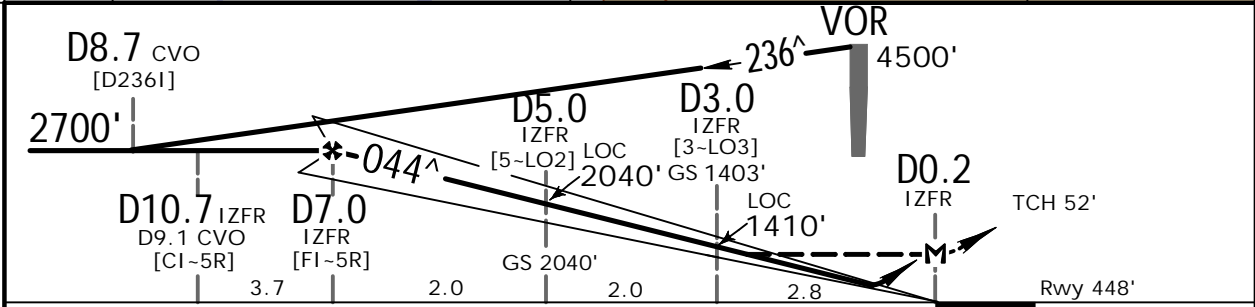
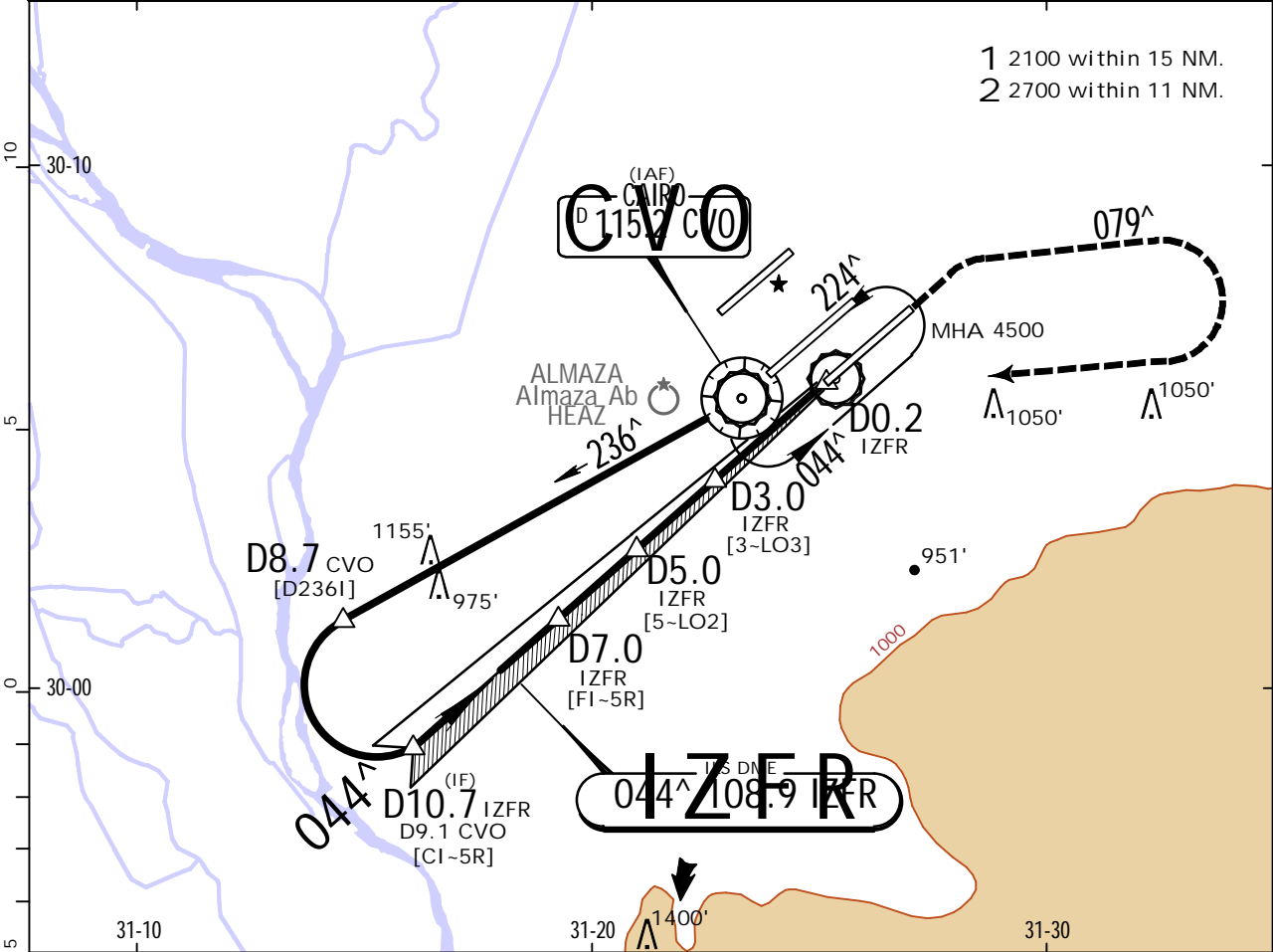
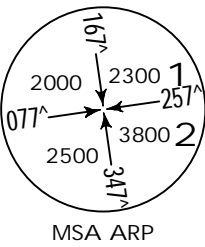
HECA/CAI  
CAIRO INTL



29 SEP 23 11-3 .Eff.5.Oct.

CAIRO, EGYPT  
ILS or LOC Rwy 05R

D-ATIS 122.6	CAIRO Approach (R) 119.050	CAIRO Tower 118.1	South 120.4	Ground North 121.9
LOC IZFR 108.9	Final Apch Crs 044^	D7.0 IZFR 2700' (2252')	ILS DA(H) Refer to Minimums	Apt Elev 467' Rwy 448'
MISSED APCH: Climb STRAIGHT AHEAD to 1500', then turn RIGHT on 079^ to 2000', then turn RIGHT to reach VOR at 4500' and hold, or as directed.				
Alt Set: hPa	Rwy Elev: 16 hPa	Trans level: FL060	Trans alt: 4500'	



Gnd speed-Kts	70	90	100	120	140	160	HIALS-II PAPI PAPI	1500'	2000'	on 079^ RT
ILS GS or LOC Descent Angle	3.00^	372	478	531	637	743				
MAP at D0.2 IZFR										

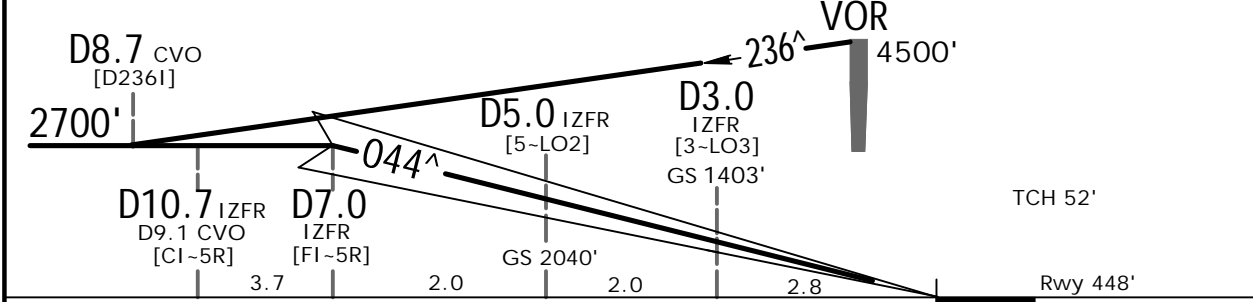
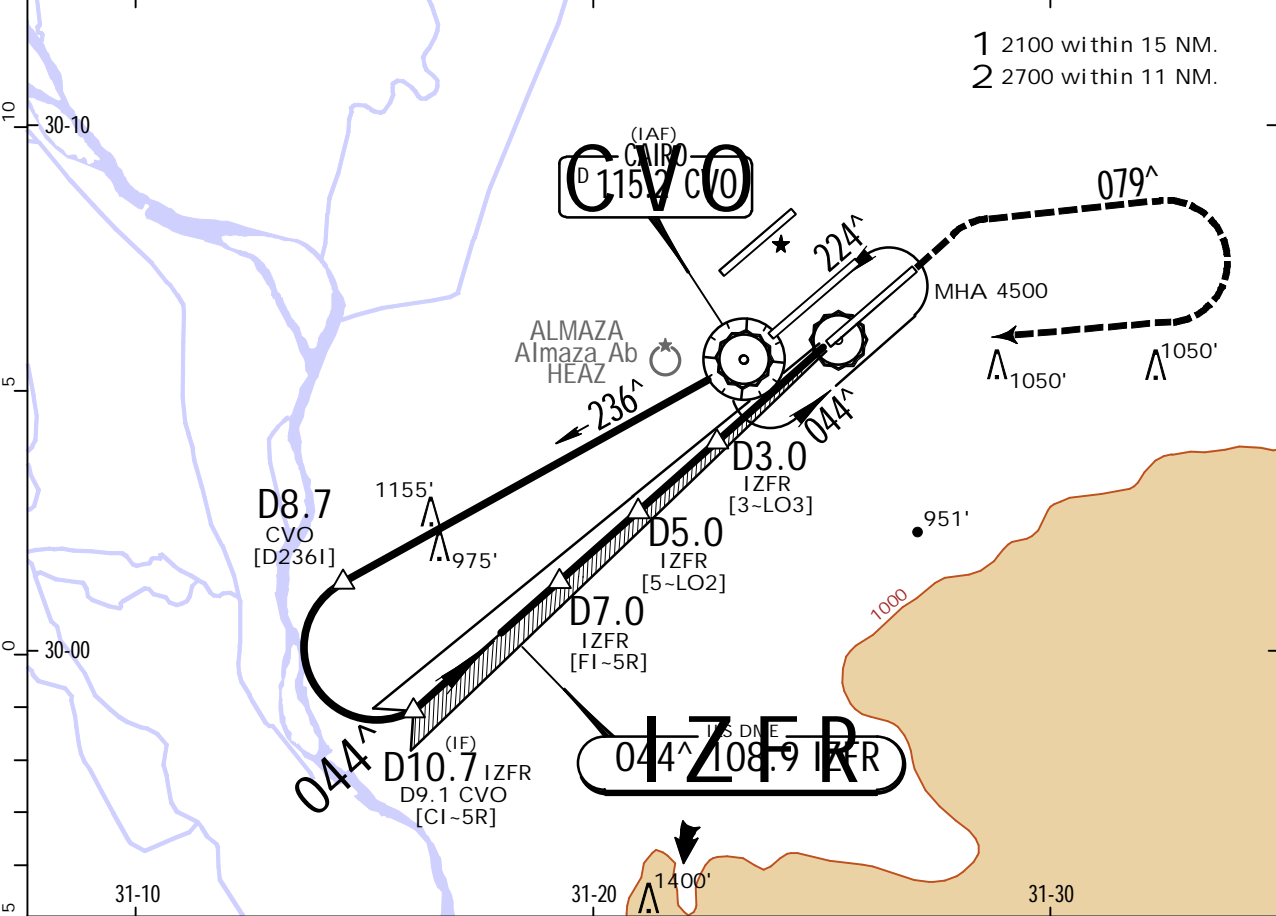
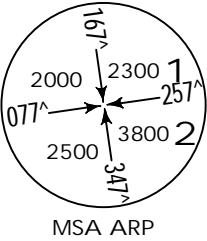
.State.		STRAIGHT-IN LANDING		LOC (GS out)	
DA(H)		ILS		MDA(H)	
A: 677' (229')		C: 697' (249')		800' (352')	
B: 689' (241')		D: 708' (260')			
		ALS out		ALS out	
A	R550m	R1200m		R900m	R1600m
B		R1300m			
C					
D	R600m				

HECA/CAI  
CAIRO INTL

JEPPESSEN  
29 SEP 23 (11-3A) .Eff.5.Oct.

CAIRO, EGYPT  
CAT II ILS Rwy 05R

D-ATIS 122.6	CAIRO Approach (R) 119.050	CAIRO Tower 118.1	South 120.4	Ground North 121.9
LOC IZFR 108.9	Final Apch Crs 044^	D7.0 IZFR 2700' (2252')	CAT II ILS RA/DA(H) Refer to Minimums	Apt Elev 467'  Rwy 448'
MISSED APCH: Climb STRAIGHT AHEAD to 1500', then turn RIGHT on 079^ to 2000', then turn RIGHT to reach VOR at 4500' and hold, or as directed.				
Alt Set: hPa	Rwy Elev: 16 hPa	Trans level: FL060	Trans alt: 4500'	
Special Aircrew and Acft Certification Required.				



Gnd speed-Kts	70	90	100	120	140	160	HIALS-II PAPI PAPI	1500'	2000'	on 079^ RT
GS	3.00^	372	478	531	637	743		↑	↖	

.State.			STRAIGHT-IN LANDING CAT II ILS		
AB RA 90' DA(H) 548' (100')		C RA 100' DA(H) 560' (112')		D RA 111' DA(H) 574' (126')	
R300m				R400m	

# HECA/CAI

## CAIRO INTL



22 SEP 23 (11-4) .Eff.5.Oct.

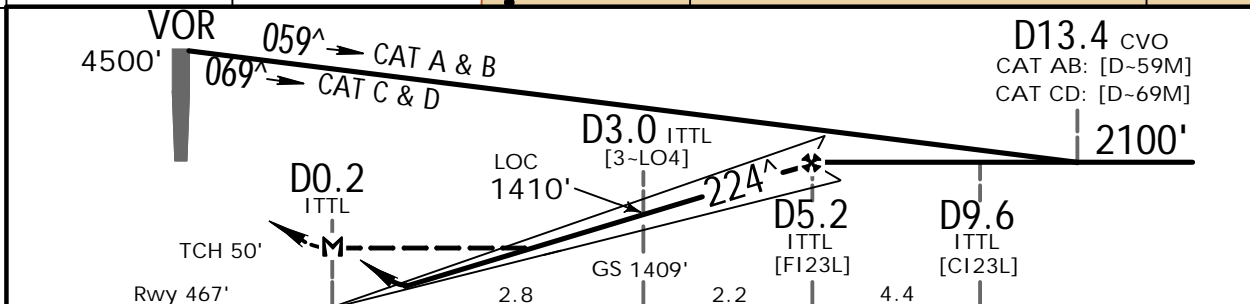
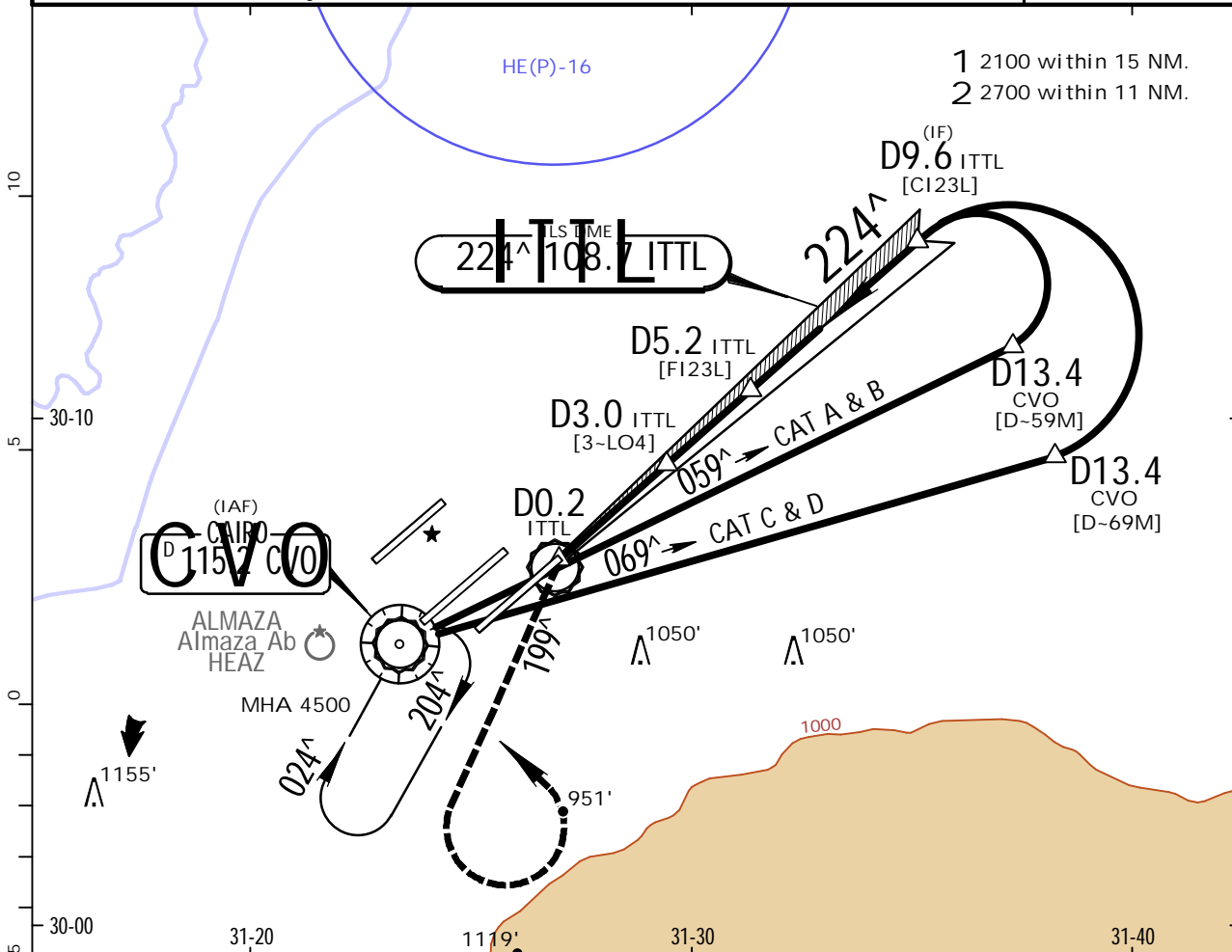
# CAIRO, EGYPT

## ILS or LOC Rwy 23L

BRIEFING STRIP™

D-ATIS 122.6		CAIRO Approach (R) 119.050		CAIRO Tower 118.1		South 120.4		Ground North 121.9	
LOC ITTL 108.7		Final Apch Crs 224^		D5.2 ITTL 2100' (1633')		ILS DA(H) Refer to Minimums		Apt Elev 467' Rwy 467'	
MISSED APCH: Turn LEFT to 199^ climbing to 2000', then turn LEFT climbing to reach VOR at 4500' and hold, or as directed.									
Alt Set: hPa		Rwy Elev: 17 hPa		Trans level: FL060		Trans alt: 4500'			

MSA ARP



Gnd speed-Kts	70	90	100	120	140	160	
ILS GS or LOC Descent Angle	3.00^	372	478	531	637	743	
MAP at D0.2 ITTL							

.State.		ILS		STRAIGHT-IN LANDING		LOC (GS out)	
DA(H)		A: 697' (230')	C: 717' (250')			MDA(H) 970' (503')	
		B: 709' (242')	D: 728' (261')				
		ALS out				ALS out	
A	R550m	R1200m		R1600m		R2400m	
B		R1300m					
C							
D	R600m						

CHANGES: Minimums.









HECA/CAI  
CAIRO INTL

JEPPESSEN  
29 SEP 23 11-5A .Eff.5.Oct.

CAIRO, EGYPT  
CAT II ILS Rwy 23C

BRIEFING STRIP™

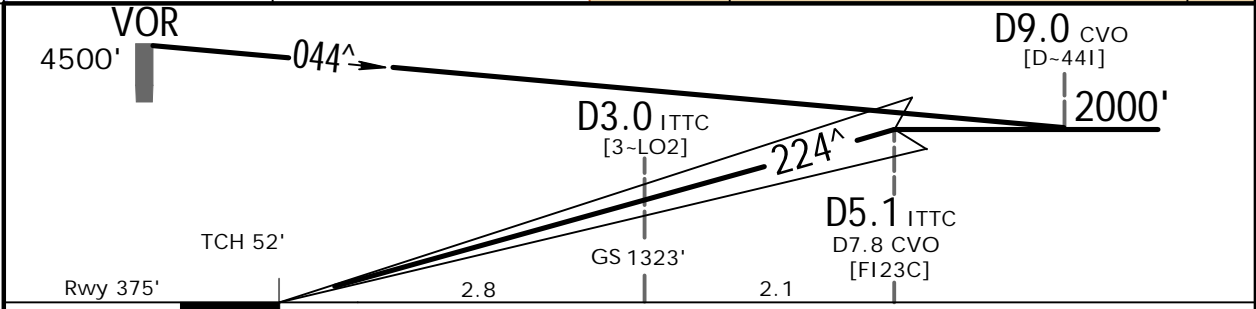
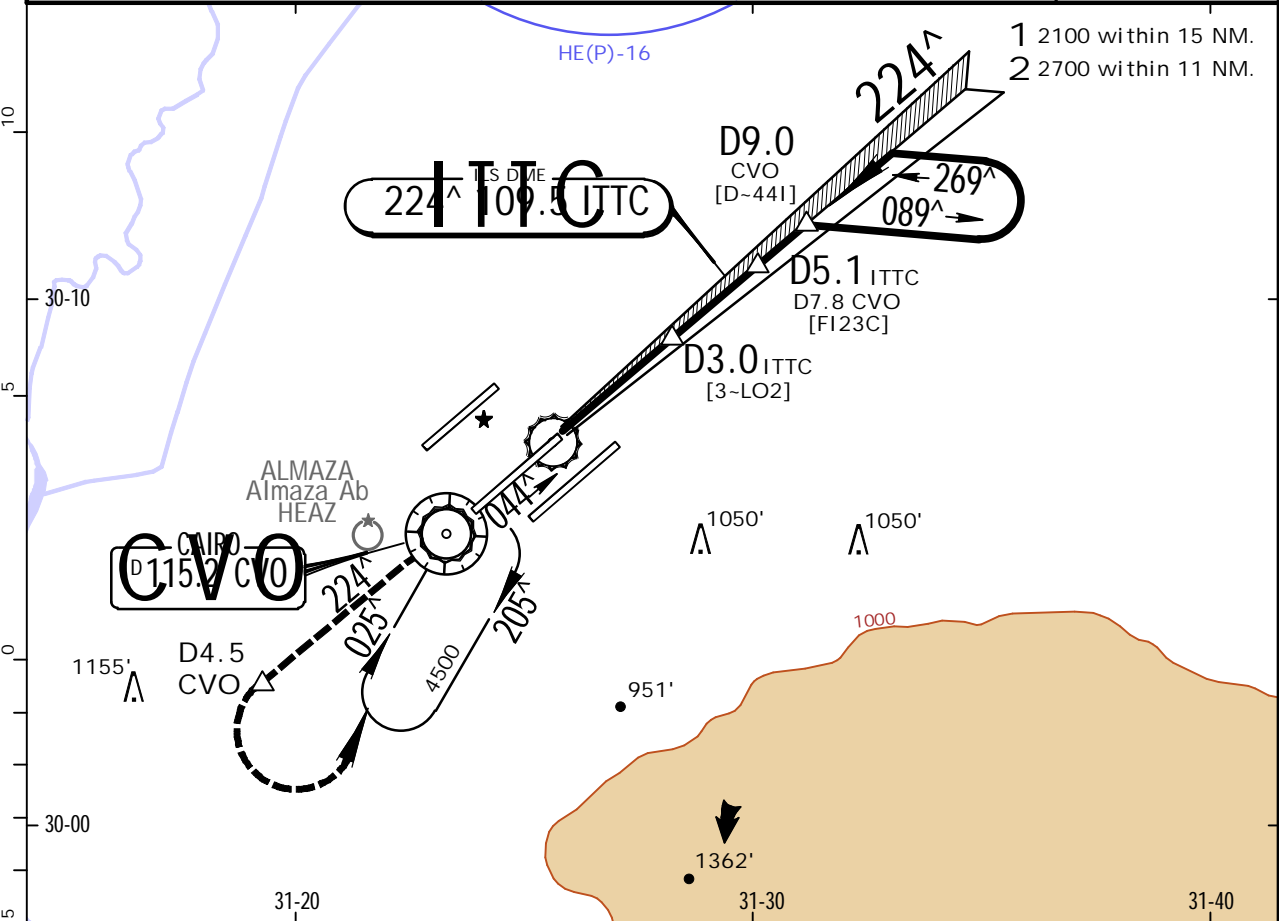
D-ATIS 122.6	CAIRO Approach (R) 119.050	CAIRO Tower 118.1	South 120.4	Ground North 121.9
LOC ITTC 109.5	Final Apch Crs 224^	D5.1 ITTC 2000' (1625')	CAT II ILS RA/DA(H) Refer to Minimums	
Apt Elev 467'			Rwy 375'	

MISSED APCH: Climb STRAIGHT AHEAD to 2000'. Not later than D4.5 CVO turn LEFT to reach VOR at 4500' and hold, or as directed.

Alt Set: hPa      Rwy Elev: 14 hPa      Trans level: FL060      Trans alt: 4500'

Special Aircrew and Acft Certification Required.

MSA ARP



Gnd speed-Kts	70	90	100	120	140	160	HIALS-II PAPI	2000' ↑ D4.5 ↑ whichever CVO is earlier
GS	3.00^	372	478	531	637	743		

.State.		STRAIGHT-IN LANDING CAT II ILS	
<div>RA <sup>A</sup>107'</div> <div>DA(H) 475' (100')</div>	<div>RA <sup>B</sup>116'</div> <div>DA(H) 484' (109')</div>	<div>RA <sup>C</sup>129'</div> <div>DA(H) 496' (121')</div>	<div>RA <sup>D</sup>143'</div> <div>DA(H) 510' (135')</div>
R300m		R400m	

HECA/CAI  
CAIRO INTL



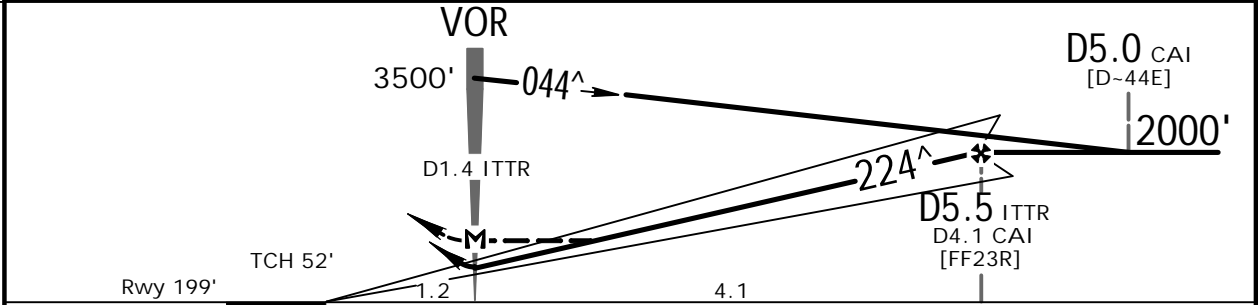
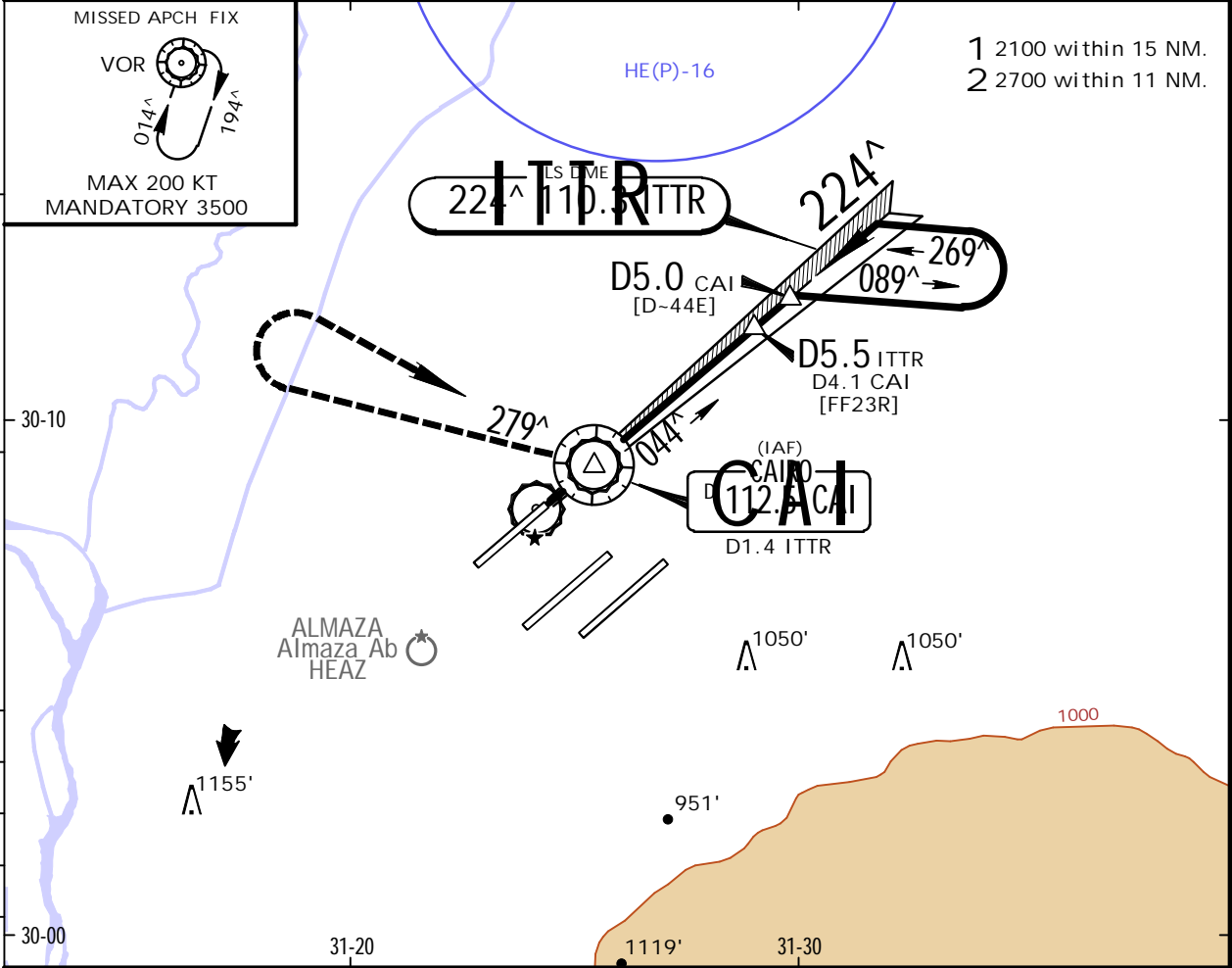
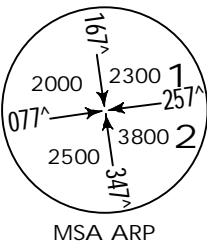
4 AUG 23

(11-6)

.Eff.10.Aug.

CAIRO, EGYPT  
ILS or LOC Rwy 23R

D-ATIS 122.6	CAIRO Approach (R) 119.050	CAIRO Tower 118.1	South 120.4	Ground North 121.9
LOC ITTR 110.3	Final Apch Crs 224^	D5.5 ITTR 2000' (1801')	ILS DA(H) Refer to Minimums	Apt Elev 467' Rwy 199'
MISSED APCH: Turn RIGHT onto track 279^ climbing to 2000', then turn RIGHT to reach VOR at 3500' and hold, or as directed. MAX 220 KT.				
Alt Set: hPa	Rwy Elev: 7 hPa	Trans level: FL060	Trans alt: 4500'	



Gnd speed-Kts	70	90	100	120	140	160	HIALS PAPI PAPI	220 KT MAX	2000' RT on 279^
ILS GS or LOC Descent Angle	3.00^	372	478	531	637	743			
MAP at VOR/D1.4 ITTR									

.State.		ILS		STRAIGHT-IN LANDING		LOC (GS out)	
DA(H)		A: 658' (459') C: 678' (479') B: 670' (471') D: 689' (490')		MDA(H) 780' (581')			
FULL		ALS out				ALS out	
A	R1500m	R2100m		R2500m		R2700m	
B		R2200m					
C	R2000m						
D	R2100m						

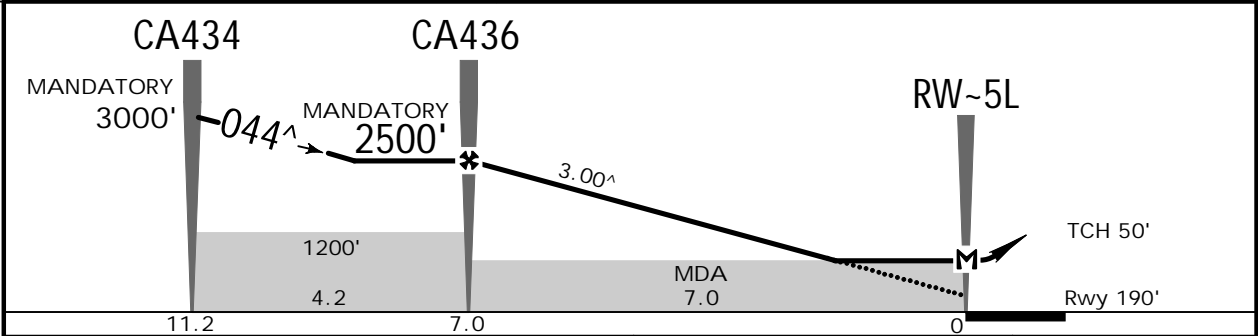
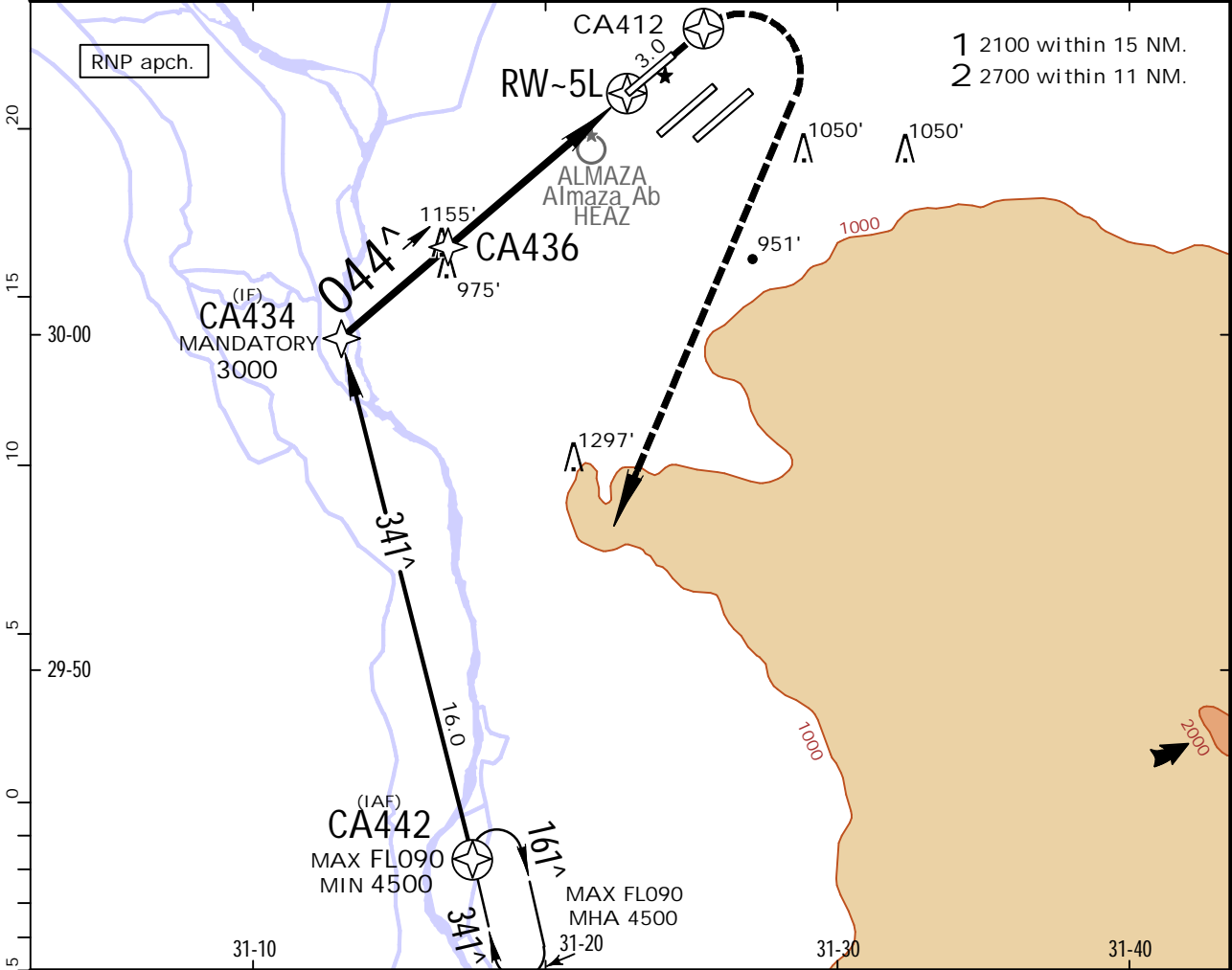
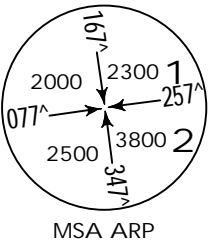
CHANGES: MSA.

HECA/CAI  
CAIRO INTL

JEPPESSEN  
4 AUG 23 (12-1).Eff.10.Aug.

CAIRO, EGYPT  
RNP Rwy 05L

D-ATIS 122.6	CAIRO Approach (R) 119.050	CAIRO Tower 118.1	South 120.4	Ground North 121.9
RNAV	Final Apch Crs 044^	CA436 MANDATORY 2500' (2310')	MDA(H) 760' (570')	Apt Elev 467'  Rwy 190'
MISSED APCH: Climb STRAIGHT AHEAD to cross CA412, then turn RIGHT to reach CA442 at 4500' and hold, or as directed.				
Alt Set: hPa	Rwy Elev: 7 hPa	Trans level: FL060	Trans alt: 4500'	



Gnd speed-Kts	70	90	100	120	140	160	HIALS PAPI PAPI	CA412 ↑
Descent Angle	3.00^	372	478	531	637	743		
MAP at RW-5L								

State. STRAIGHT-IN LANDING  
LNAV  
MDA(H) 760' (570')

ALS out	
---------	--

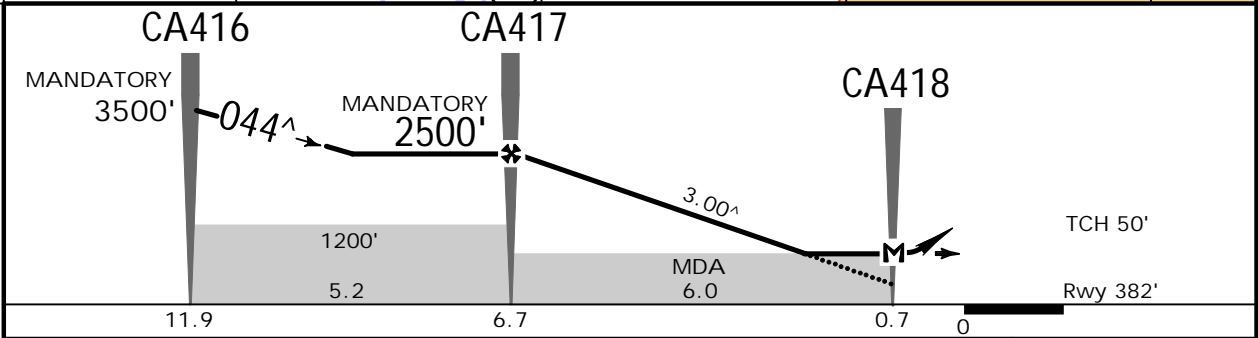
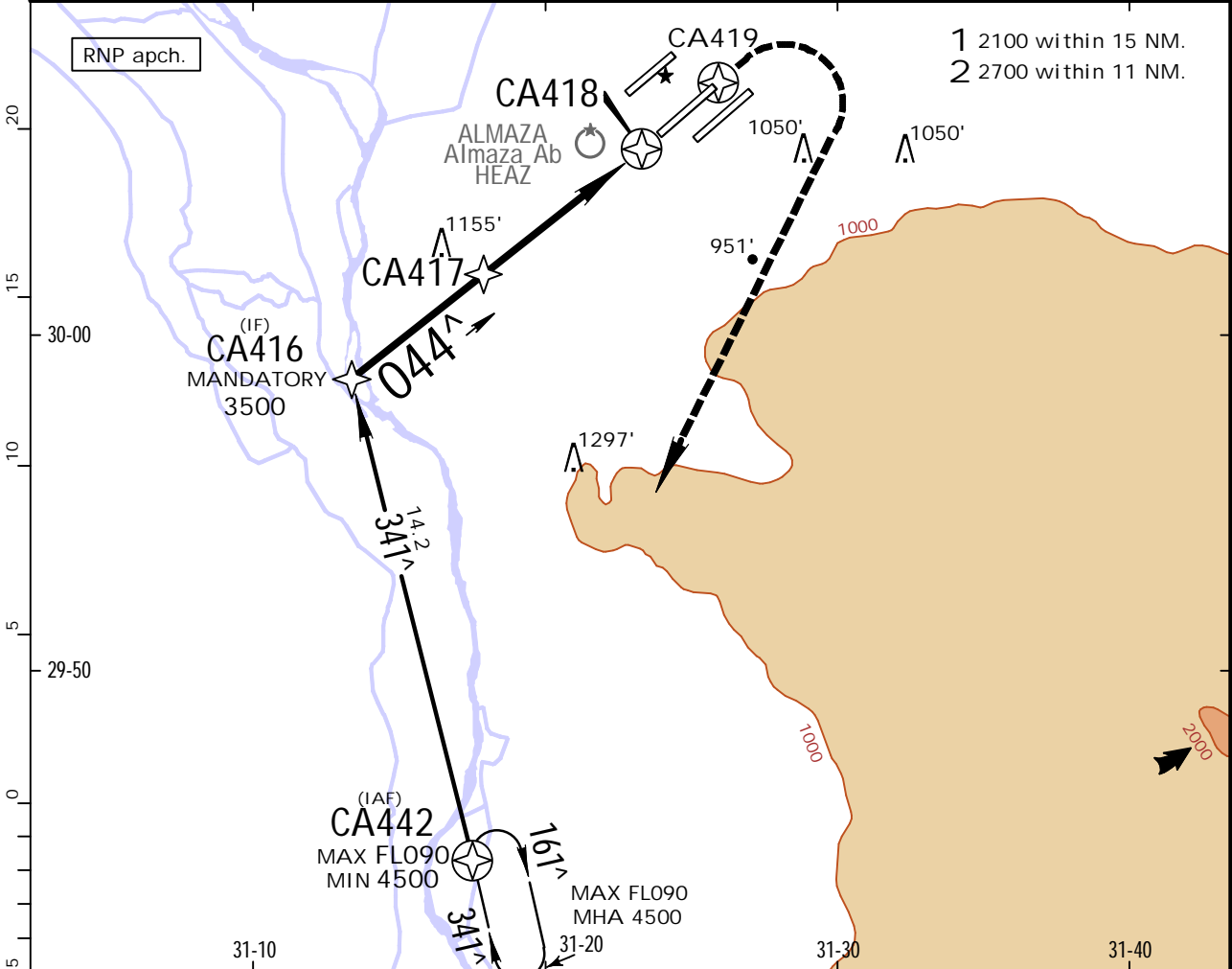
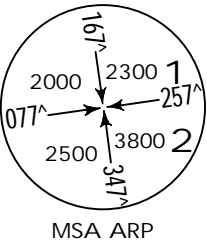
PANS OPS	A	R1900m	R2600m
	B		
	C		
	D		

HECA/CAI  
CAIRO INTL

JEPPESSEN  
4 AUG 23 (12-2) .Eff.10.Aug.

CAIRO, EGYPT  
RNP Rwy 05C

D-ATIS 122.6	CAIRO Approach (R) 119.050		CAIRO Tower 118.1	South 120.4	Ground North 121.9
RNAV	Final Apch Crs 044^	CA417 MANDATORY 2500' (2118')	MDA(H) 710' (328')	Apt Elev 467'  Rwy 382'	
MISSED APCH: Climb STRAIGHT AHEAD to cross CA419, then turn RIGHT to reach CA442 at 4500' and hold or as directed.					
Alt Set: hPa		Rwy Elev: 14 hPa	Trans level: FL060		Trans alt: 4500'



Gnd speed-Kts	70	90	100	120	140	160	HIALS-II PAPI PAPI	CA419 ↑
Descent Angle 3.00 <sup>^</sup>	372	478	531	637	743	849		
MAP at CA418								

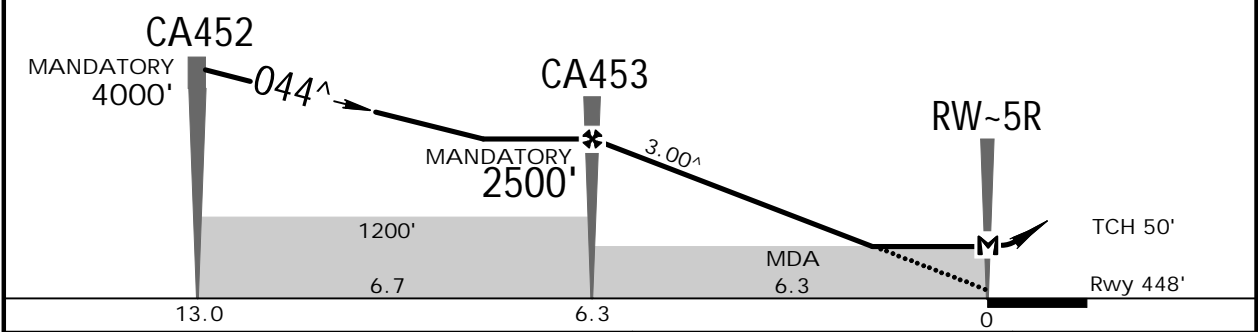
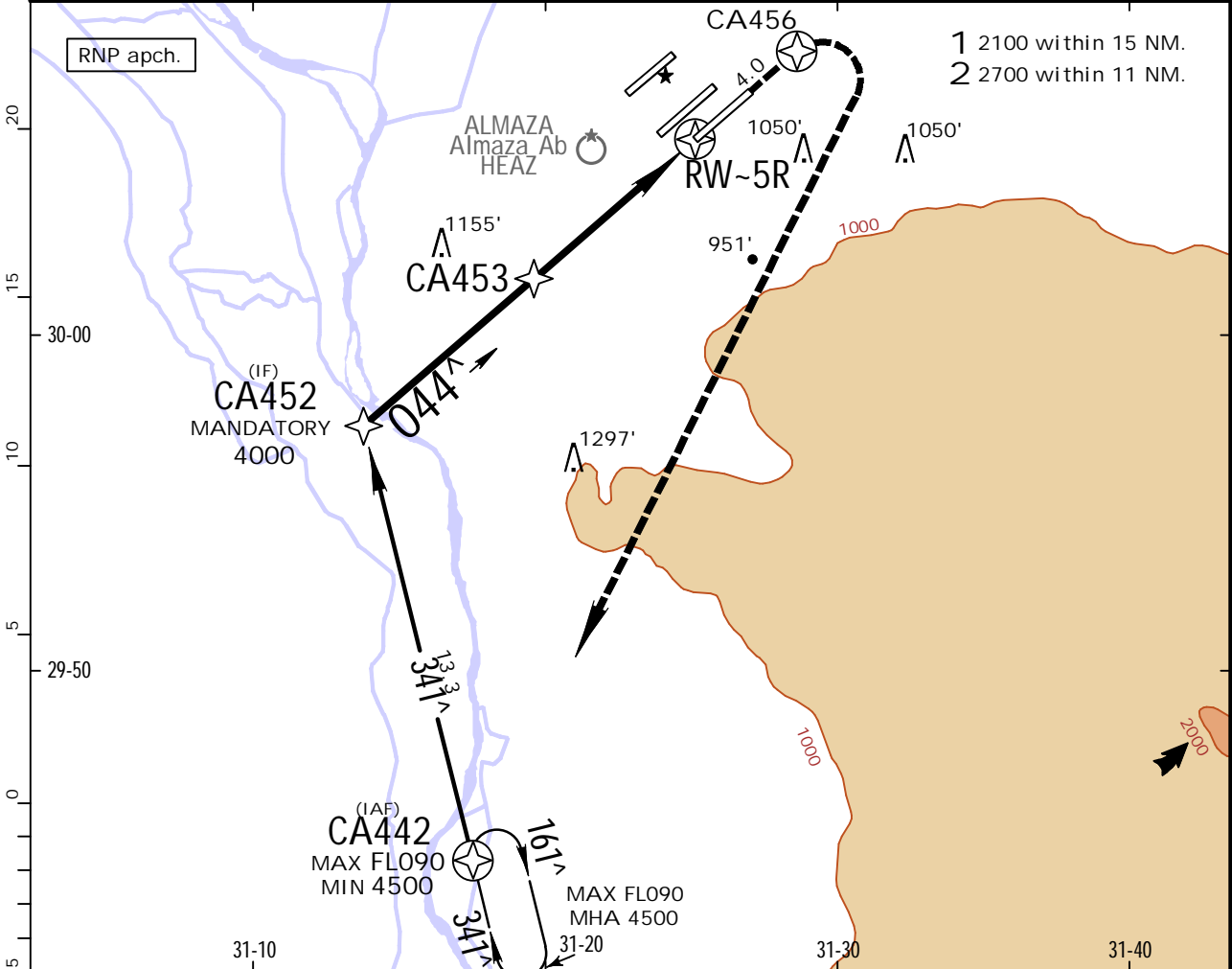
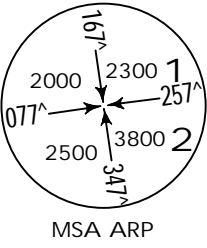
.State.		STRAIGHT-IN LANDING LNAV MDA(H) 710' (328')		ALS out			
A	R1000m		R1500m				
B							
C							
D							

HECA/CAI  
CAIRO INTL

JEPPESSEN  
4 AUG 23 (12-3) .Eff.10.Aug.

CAIRO, EGYPT  
RNP Rwy 05R

D-ATIS 122.6	CAIRO Approach (R) 119.050		CAIRO Tower 118.1	South 120.4	Ground North 121.9
RNAV	Final Apch Crs 044^	CA453 MANDATORY 2500' (2052')	MDA(H) 820' (372')	Apt Elev 467'  Rwy 448'	
MISSED APCH: Climb STRAIGHT AHEAD to cross CA456, then turn RIGHT to reach CA442 at 4500' and hold or as directed.					
Alt Set: hPa	Rwy Elev: 16 hPa		Trans level: FL060		Trans alt: 4500'



Gnd speed-Kts	70	90	100	120	140	160	HIALS-II PAPI PAPI	CA456 ↑
Descent Angle	3.00^	372	478	531	637	743		
MAP at RW-5R								

.State.		STRAIGHT-IN LANDING LNAV MDA(H) 820' (372')			
				ALS out	
A	R1000m			R1700m	
B					
C					
D					

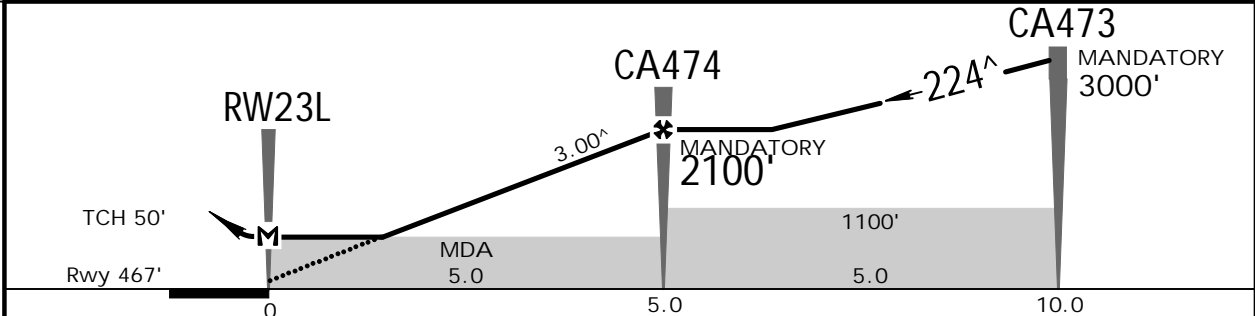
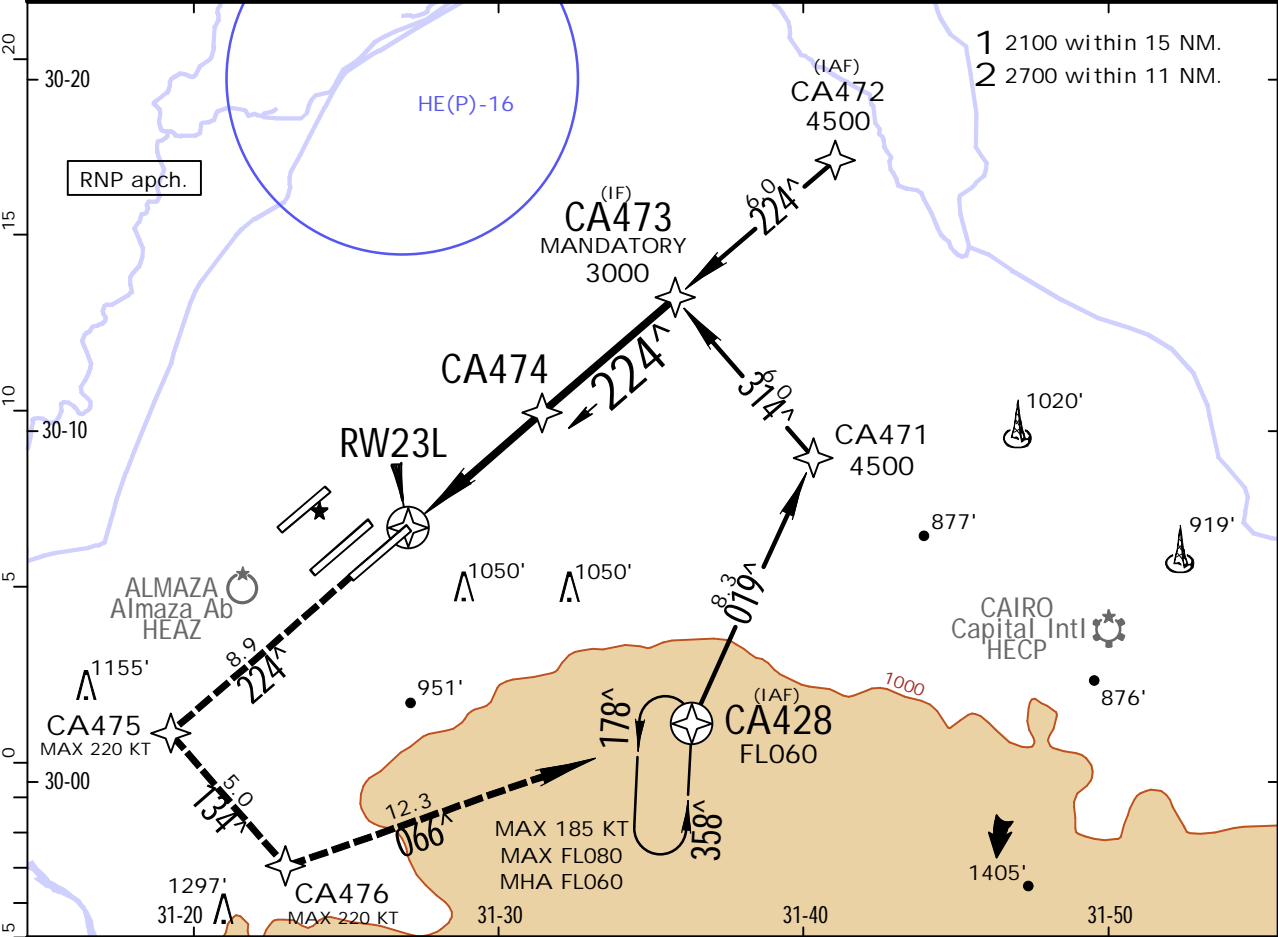
HECA/CAI  
CAIRO INTL



4 AUG 23 (12-4) .Eff.10.Aug.

CAIRO, EGYPT  
RNP Rwy 23L

D-ATIS 122.6		CAIRO Approach (R) 119.050		CAIRO Tower 118.1		Ground South 120.4   North 121.9	
RNAV	Final Apch Crs 224 <sup>^</sup>	CA474 MANDATORY 2100' (1633')	MDA(H) 830' (363')		Apt Elev 467' Rwy 467'		
MISSED APCH: Climb STRAIGHT AHEAD to CA475, then turn LEFT to CA476, then turn LEFT to CA428 at FL060 and hold or as directed.							
Alt Set: hPa		Rwy Elev: 17 hPa		Trans level: FL060		Trans alt: 4500'	
							MSA ARP



Gnd speed-Kts	70	90	100	120	140	160	 CA475
Descent Angle 3.00^	372	478	531	637	743	849	
MAP at RW23L							

.State.		STRAIGHT-IN LANDING LNAV	
		MDA(H) 830' (363')	

		ALS out	
A	R1000m		R1700m
B			
C			
D			

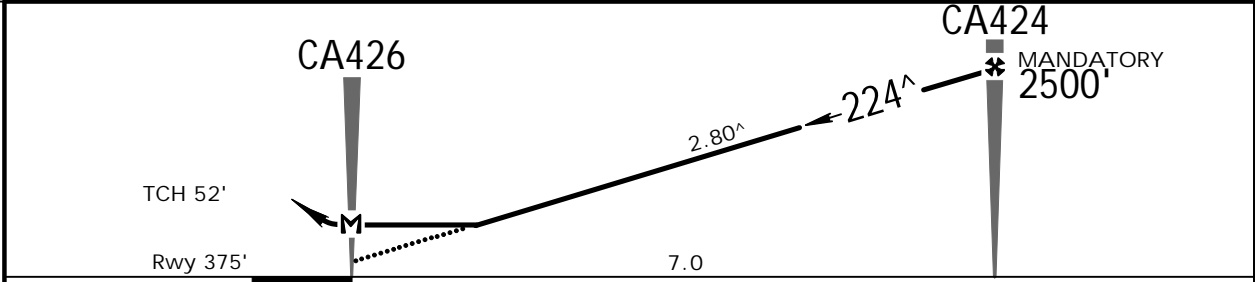
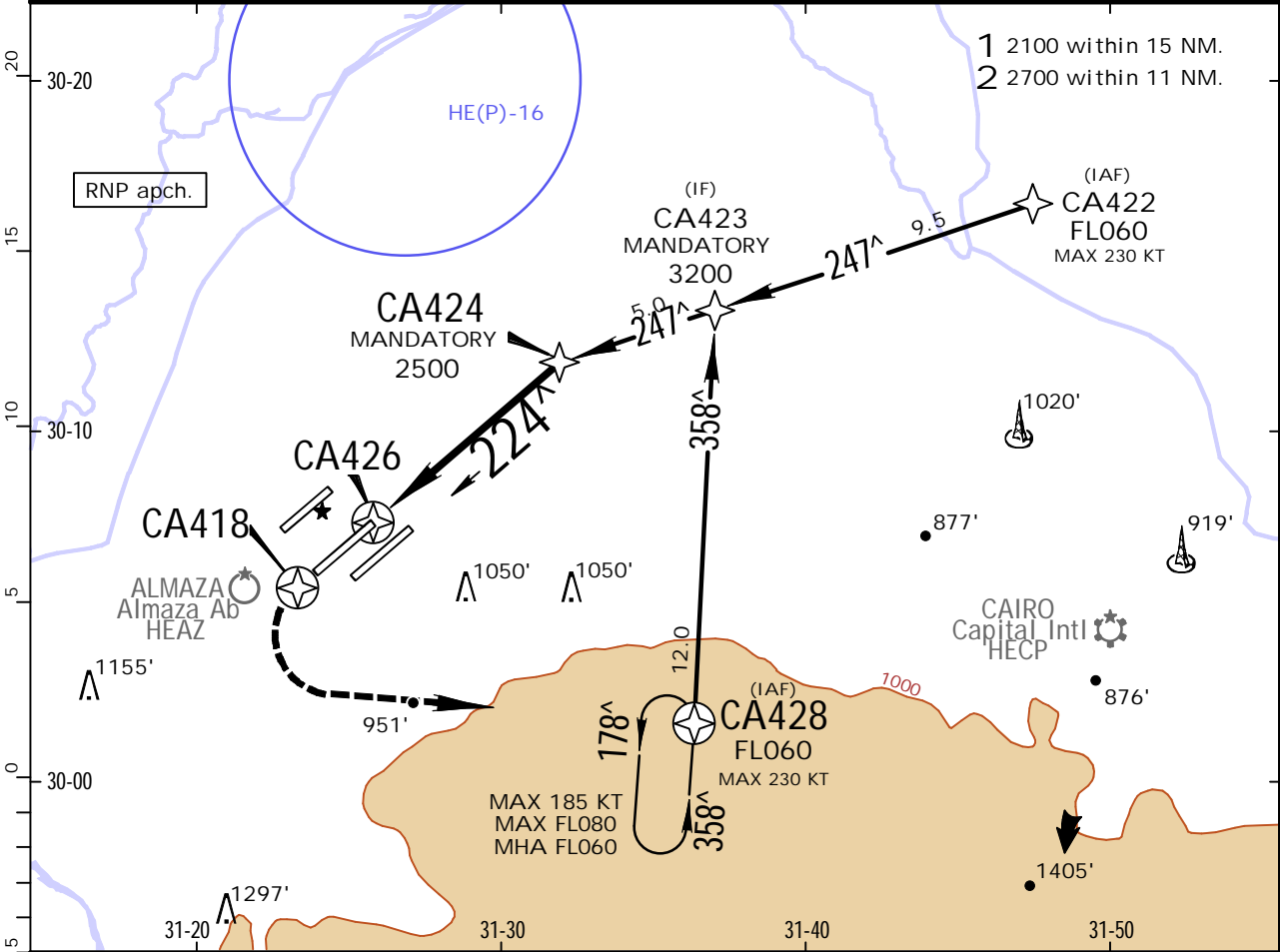


HECA/CAI  
CAIRO INTL

JEPPesen  
4 AUG 23 (12-5) .Eff.10.Aug.

CAIRO, EGYPT  
RNP Rwy 23C

D-ATIS 122.6		CAIRO Approach (R) 119.050		CAIRO Tower 118.1		Ground South 120.4   North 121.9	
RNAV	Final Apch Crs 224 <sup>^</sup>	CA424 MANDATORY 2500' (2125')	MDA(H) 810' (435')	Apt Elev 467' Rwy 375'			
MISSED APCH: Climb STRAIGHT AHEAD to cross CA418, then turn LEFT to reach CA428 at FL060 and hold or as directed.							
Alt Set: hPa		Rwy Elev: 14 hPa		Trans level: FL060		Trans alt: 4500'	
							MSA ARP



Gnd speed-Kts	70	90	100	120	140	160		CA418
Descent Angle	2.80 <sup>^</sup>	347	446	495	594	792		
MAP at CA426								

State.		STRAIGHT-IN LANDING LNAV MDA(H) 810' (435')		ALS out	
--------	--	---	--	---------	--

PANS OPS	A	R1600m		R2000m	
	B				
	C				
	D				

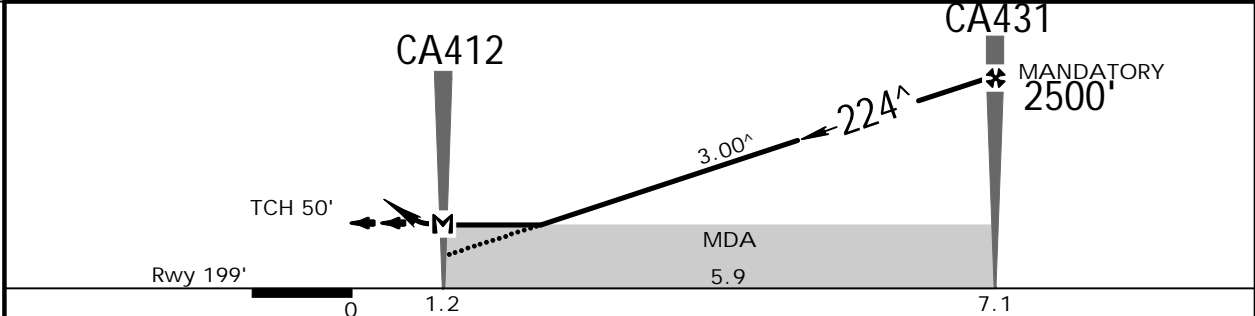
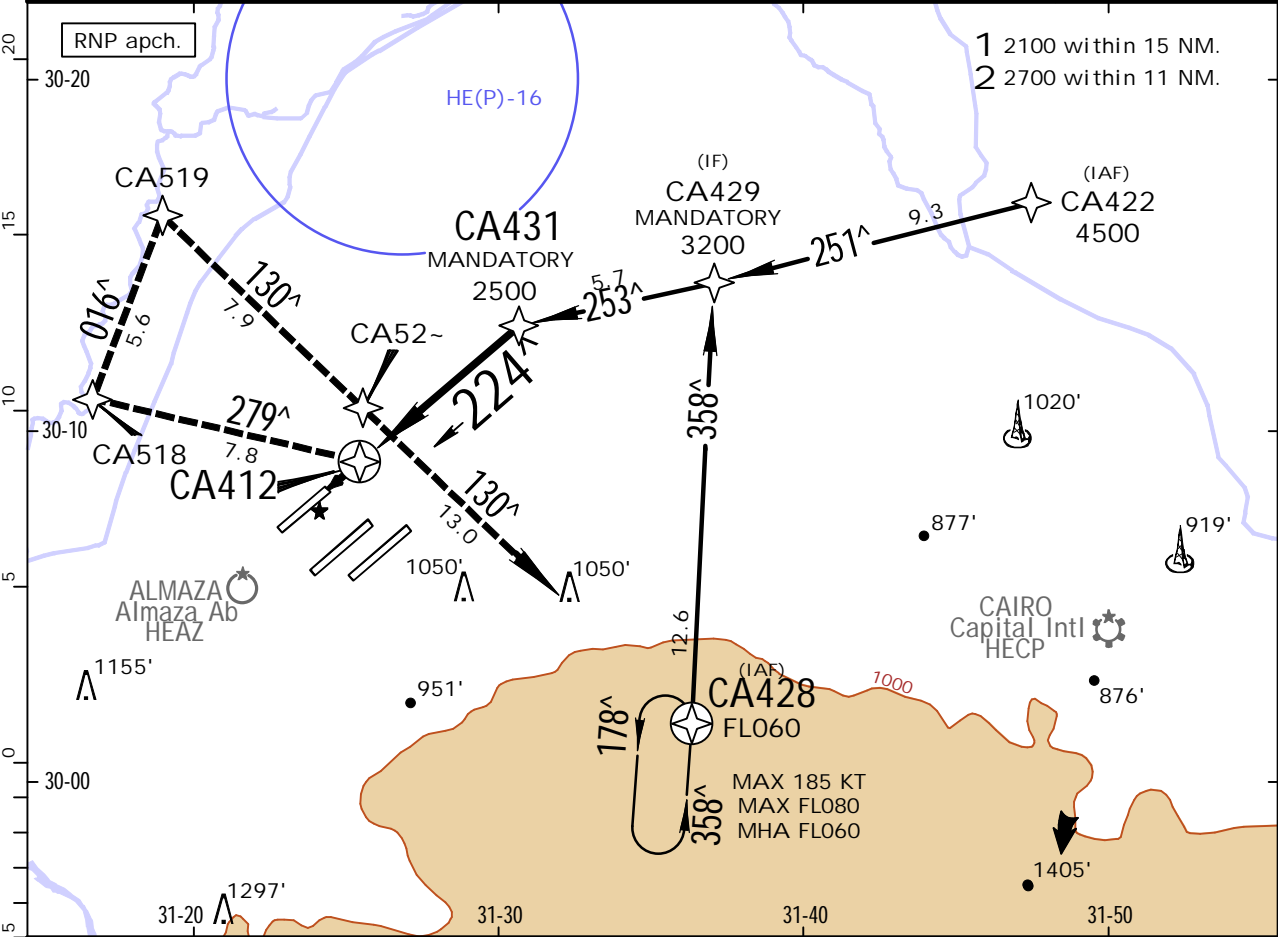
HECA/CAI  
CAIRO INTL



4 AUG 23 (12-6) .Eff.10.Aug.

CAIRO, EGYPT  
RNP Rwy 23R

D-ATIS 122.6		CAIRO Approach (R) 119.050		CAIRO Tower 118.1		Ground South 120.4   North 121.9	
RNAV	Final Apch Crs 224^	CA431 MANDATORY 2500' (2301')	MDA(H) 830' (631')	Apt Elev 467' Rwy 199'			
MISSED APCH: Climb immediate RIGHT turn on 279^ to CA518 at 2000' or above, then turn RIGHT to CA519 at 2800' or above, then turn RIGHT to CA52~ at 4000', then to CA428 at FL060 and hold or as directed. MAX 185 KT.							
Alt Set: hPa		Rwy Elev: 7 hPa		Trans level: FL060		Trans alt: 4500'	
							MSA ARP



Gnd speed-Kts	70	90	100	120	140	160	<div><div>HIALS</div><div><div><div></div></div></div><div>PAPI</div><div><div><div></div></div><div><div></div></div><div><div></div></div><div><div></div></div></div><div>PAPI</div></div>	185 KT MAX	at or above 2000' on RT	279^	CA518
Descent Angle 3.00^	372	478	531	637	743	849					
MAP at CA412											

State.											
STRAIGHT-IN LANDING											
LNAV											
MDA(H) 830' (631')											
						ALS out					

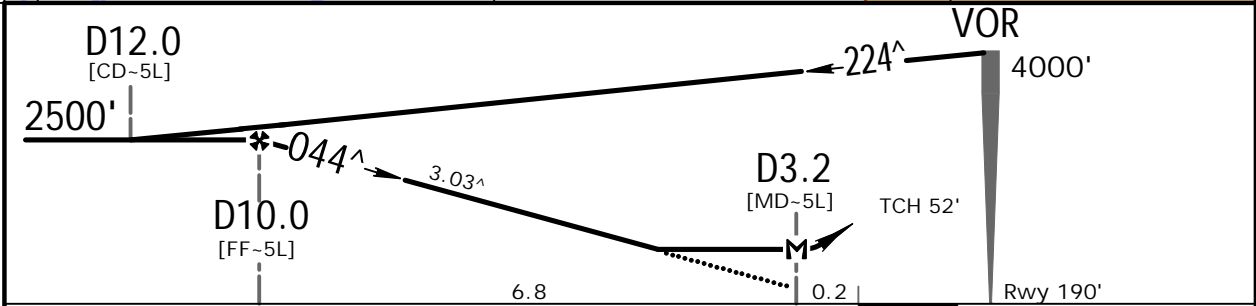
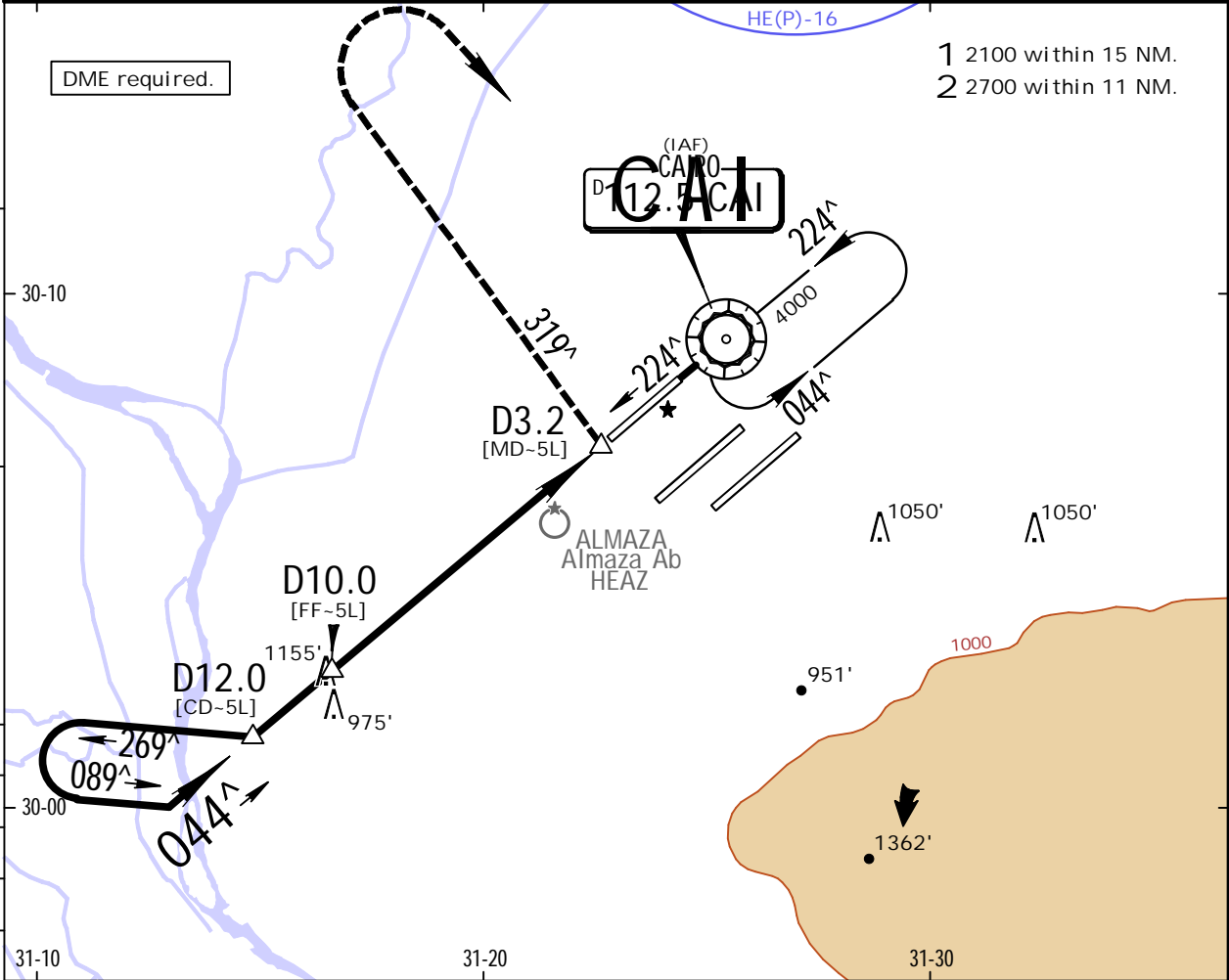
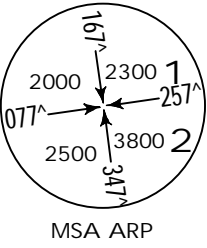
PANS OPS	A										
	B										
	C	R2700m					R2900m				
	D										

HECA/CAI  
CAIRO INTL

JEPPESSEN  
4 AUG 23 (13-1) .Eff.10.Aug.

CAIRO, EGYPT  
VOR Rwy 05L

D-ATIS 122.6	CAIRO Approach (R) 119.050		CAIRO Tower 118.1	South 120.4	Ground North 121.9
VOR CAI 112.5	Final Apch Crs 044^	D10.0 2500' (2310')	MDA(H) 760' (570')	Apt Elev 467'	Rwy 190'
MISSED APCH: Turn LEFT onto 319^ climbing to 2500', then turn RIGHT to VOR and hold at 4000', or as directed.					
Alt Set: hPa	Rwy Elev: 7 hPa	Trans level: FL060		Trans alt: 4500'	



Gnd speed-Kts	70	90	100	120	140	160	HIALS PAPI PAPI	2500' ← onto 319^ LT
Descent Angle	3.03^	375	482	536	643	750		
MAP at D3.2								

.State.		STRAIGHT-IN LANDING	
		MDA(H) 760' (570')	
		ALS out	
A	R1900m		R2600m
B			
C			
D			

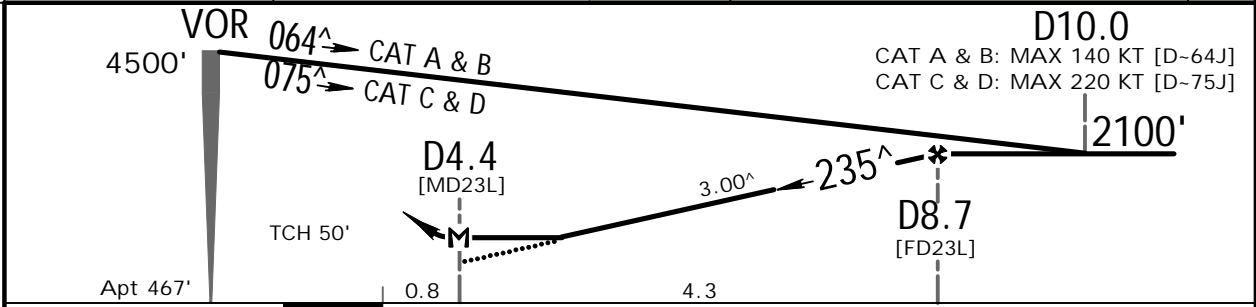
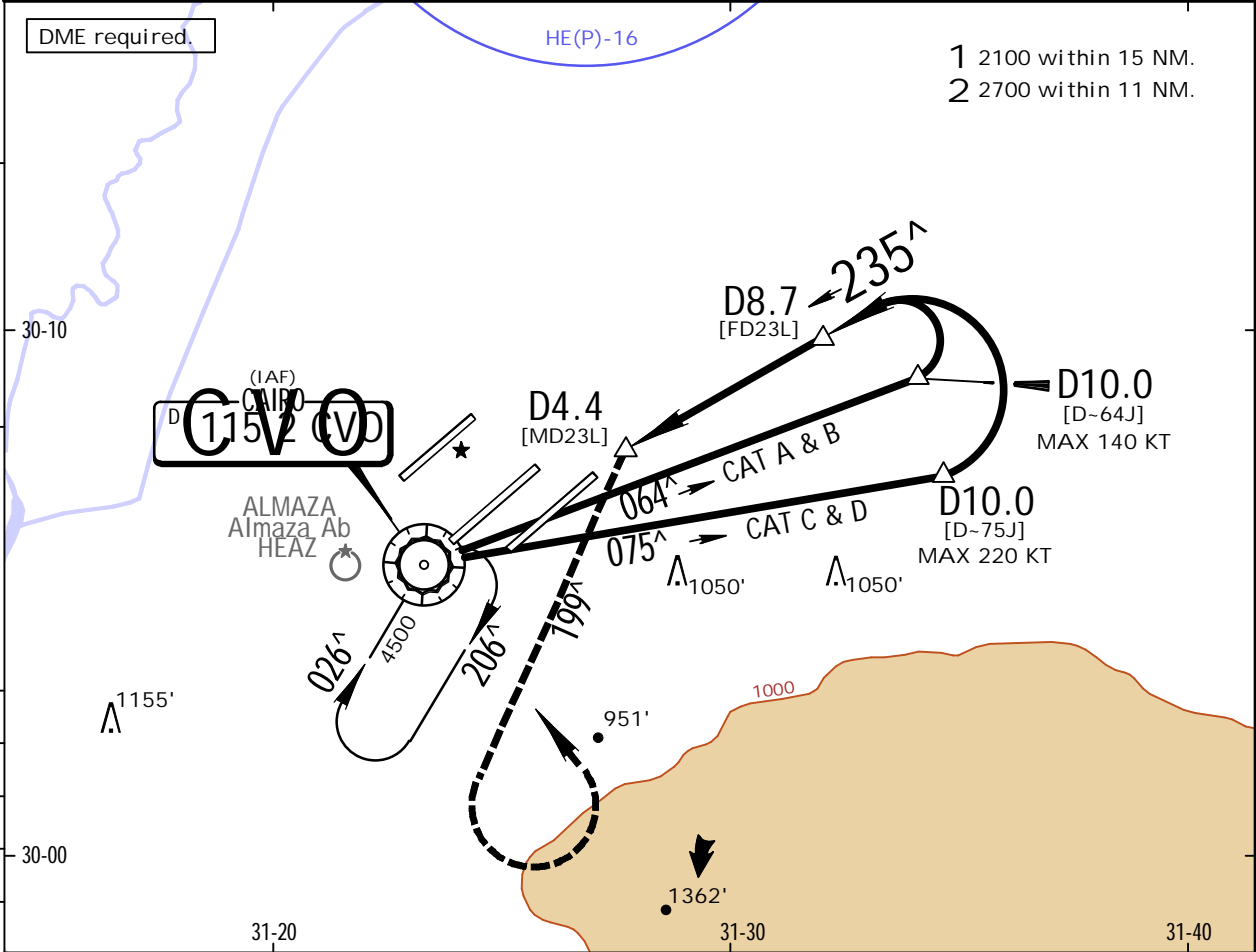
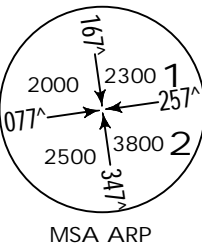


HECA/CAI  
CAIRO INTL

JEPPESSEN  
4 AUG 23 (13-3) .Eff.10.Aug.

CAIRO, EGYPT  
VOR Rwy 23L

D-ATIS 122.6	CAIRO Approach (R) 119.050	CAIRO Tower 118.1	South 120.4	Ground North 121.9
VOR CVO 115.2	Final Apch Crs 235^	D8.7 2100' (1633')	MDA(H) 970' (503')	Apt Elev 467'
MISSED APCH: Turn LEFT onto 199^ climbing at or above 2000', then turn LEFT to reach VOR at 4500' and hold, or as directed.				
Alt Set: hPa	Apt Elev: 17 hPa	Trans level: FL060	Trans alt: 4500'	



Gnd speed-Kts	70	90	100	120	140	160	HIALS-II PAPI PAPI	At or above 2000' LT	onto 199^
Descent Angle	3.00^	372	478	531	637	743			
MAP at D4.4									

State. STRAIGHT-IN LANDING  
MDA(H) 970' (503')

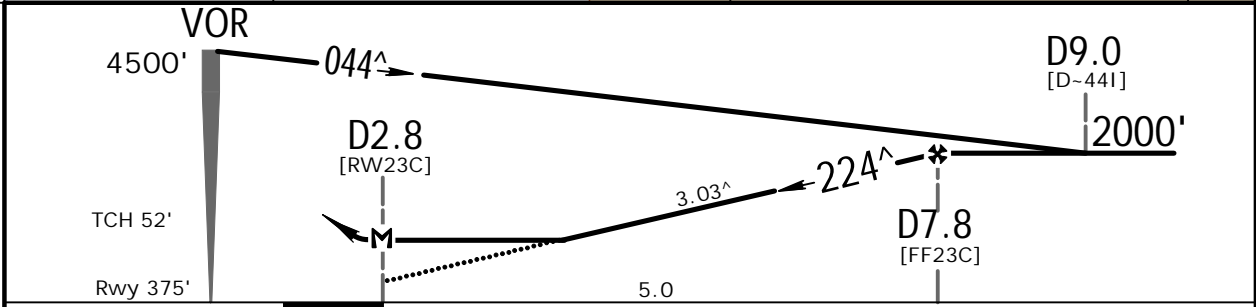
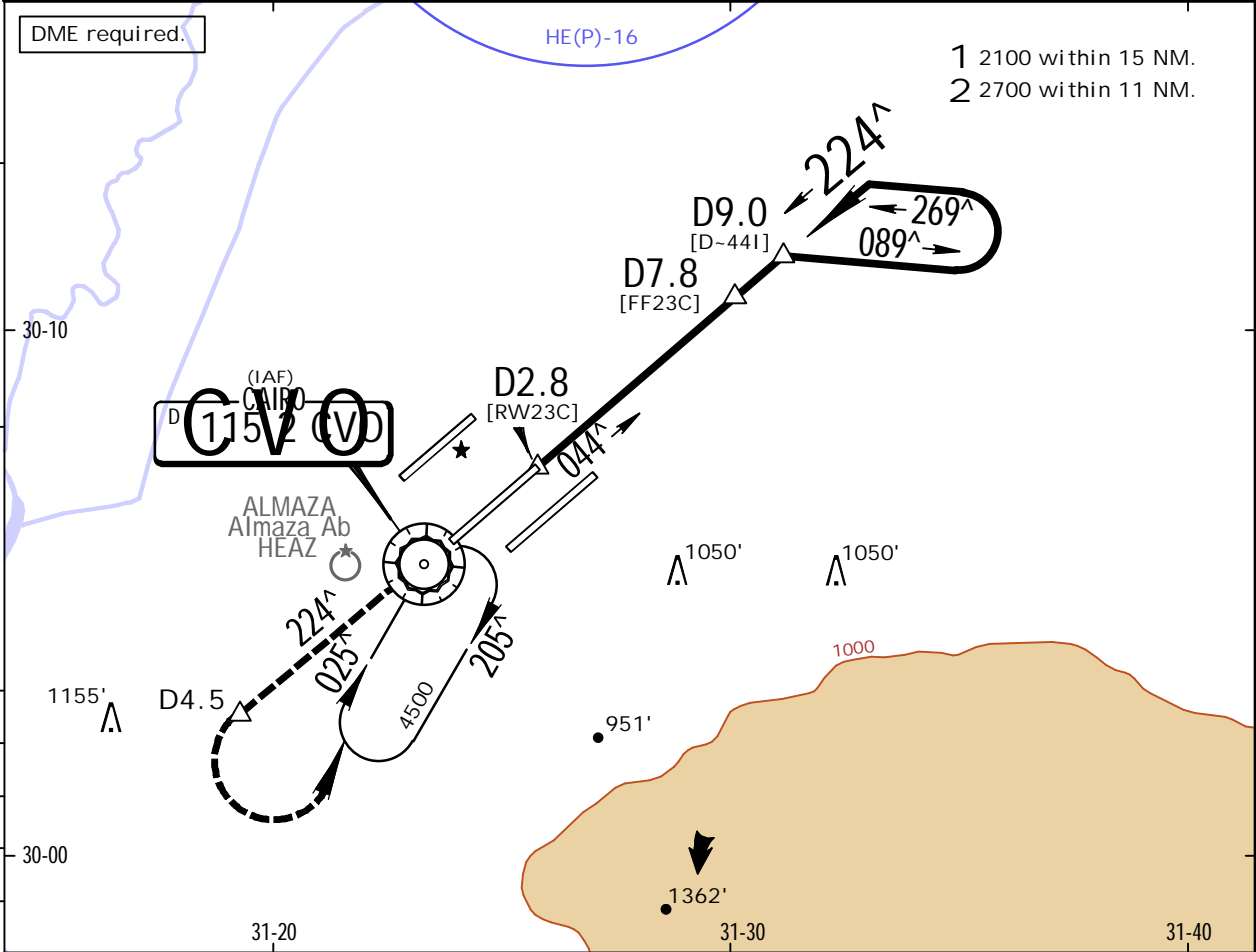
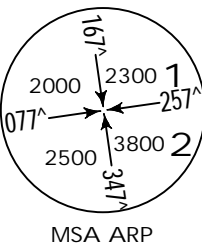
		ALS out	
A	R1600m	R2400m	
B			
C			
D			

HECA/CAI  
CAIRO INTL

JEPPESSEN  
4 AUG 23 (13-4) .Eff.10.Aug.

CAIRO, EGYPT  
VOR Rwy 23C

D-ATIS 122.6	CAIRO Approach (R) 119.050		CAIRO Tower 118.1	South 120.4	Ground North 121.9
VOR CVO 115.2	Final Apch Crs 224^	D7.8 2000' (1625')	MDA(H) 760' (385')	Apt Elev 467' Rwy 375'	
MISSED APCH: Climb STRAIGHT AHEAD on 224^ to 2500'. Not later than D4.5 turn LEFT to reach VOR at 4500' and hold, or as directed.					
Alt Set: hPa		Rwy Elev: 14 hPa	Trans level: FL060		Trans alt: 4500'



Gnd speed-Kts	70	90	100	120	140	160	HIALS-II PAPI PAPI	2500' ↑ whichever is earlier ↑	D4.5 ↑
Descent Angle 3.03^	375	482	536	643	750	858			
MAP at D2.8									

State. STRAIGHT-IN LANDING  
MDA(H) 760' (385')

		ALS out	
A	R1400m	R1800m	
B			
C			
D			

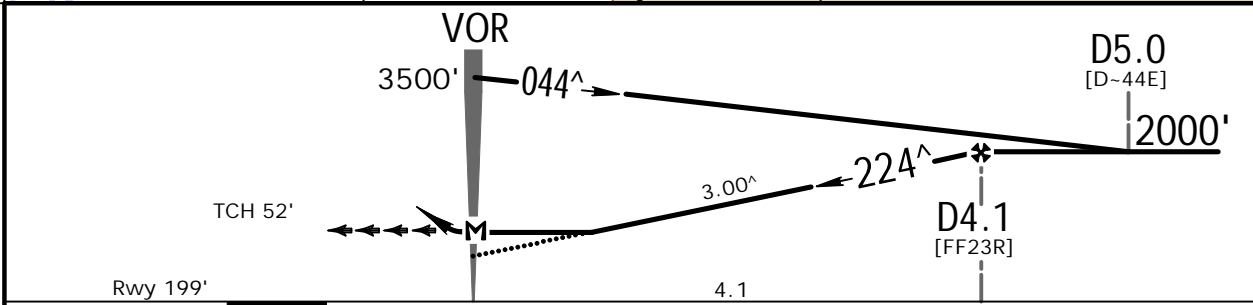
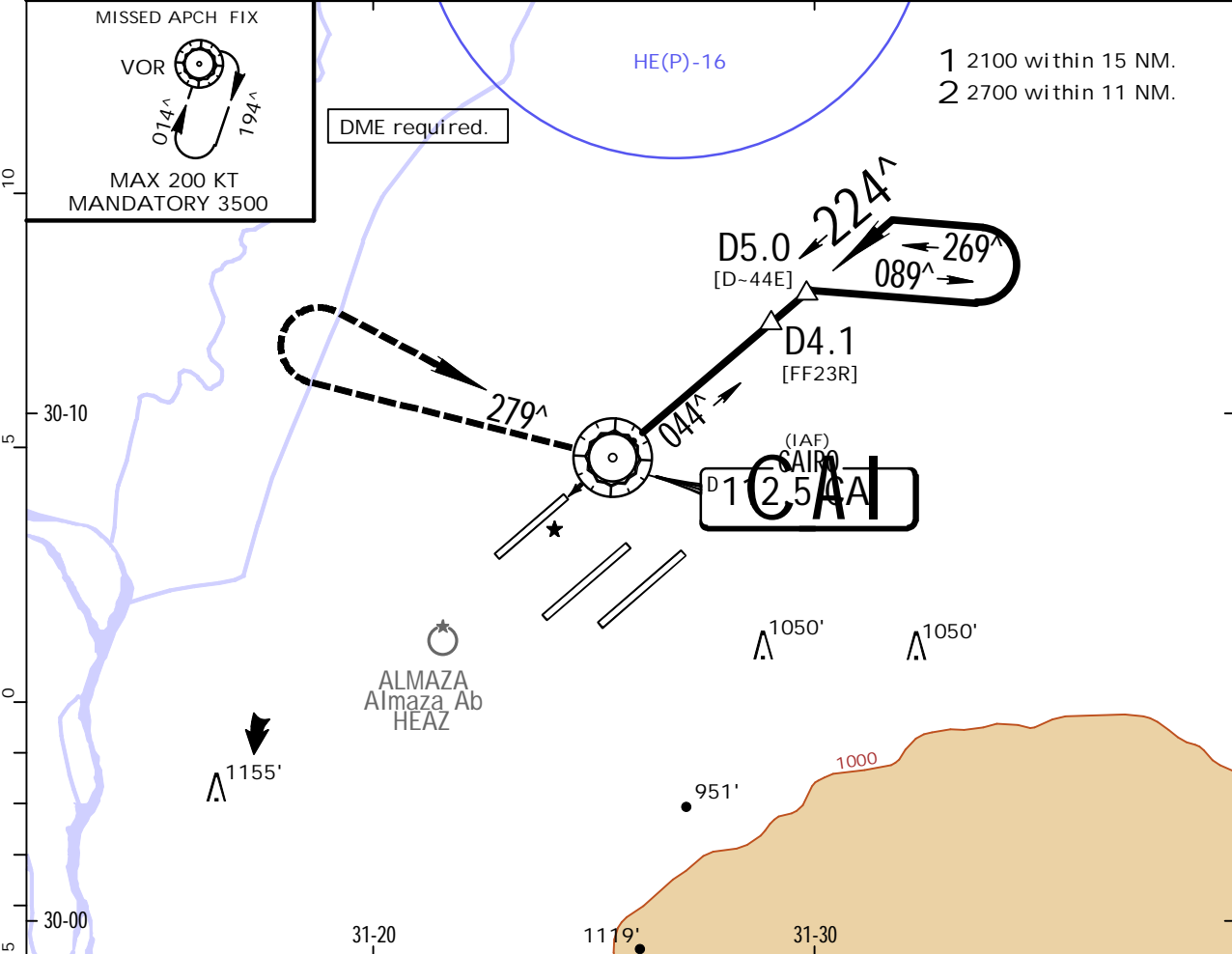
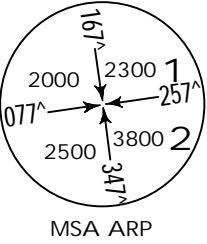


HECA/CAI  
CAIRO INTL

JEPPESSEN  
4 AUG 23 13-5 .Eff.10.Aug.

CAIRO, EGYPT  
VOR Rwy 23R

D-ATIS 122.6	CAIRO Approach (R) 119.050		CAIRO Tower 118.1	South 120.4	Ground North 121.9
VOR CAI 112.5	Final Apch Crs 224^	D4.1 2000' (1801')	MDA(H) 780' (581')	Apt Elev 467'  Rwy 199'	
MISSED APCH: Turn RIGHT onto track 279^ climbing to 2000', then turn RIGHT to reach VOR at 3500' and hold, or as directed. MAX 220 KT.					
Alt Set: hPa	Rwy Elev: 7 hPa		Trans level: FL060		Trans alt: 4500'



Gnd speed-Kts	70	90	100	120	140	160	HIALS PAPI PAPI	220 KT MAX	2000' on RT 279^
Descent Angle 3.00^	372	478	531	637	743	849			
MAP at VOR									

.State.		STRAIGHT-IN LANDING	
		MDA(H) 780' (581')	
		ALS out	

A	R2500m	R2700m
B		
C		
D		